



WE DELIVER ON OUR PROMISE!



**PRUDENTIAL IS...
THE RIGHT
CHOICE**

**INDUSTRIAL UNIFORMS
CAREER & CASUAL
CULINARY APPAREL**

**FACILITY PRODUCTS
NAPKINS
RESTROOM PRODUCTS**

**PROTECTIVE APPAREL
TOWELS
CLEANROOM**

**MEDICAL APPAREL
MOPS & BUCKETS
MATS**

CALL: 800-767-5536

PRUDENTIALUNIFORMS.COM

POSITIVE IMAGE PROGRAM



Dan Clark, COB
Second Generation

Chris Welch, President

John Clark, CEO
Third Generation

WELCOME TO OUR POSITIVE IMAGE PROGRAM

Prudential Overall Supply offers a variety of uniform and related services. Businesses of all types use our services for needs in career, casual and executive apparel.

Prudential Overall Supply can accommodate any business with rental, lease and purchase programs. Also available are custom embroidery and name tags.

As a supplier of industrial products, Prudential Overall Supply offers facility products such as wiping towels, mats, mops, restroom supplies and paper products.



WHY A POSITIVE IMAGE PROGRAM IS RIGHT FOR YOUR COMPANY



MAINTAINING A POSITIVE IMAGE FOR YOUR BUSINESS IS OUR MISSION

Prudential's Positive Image Program professionally outfits your employees and facilities to the standards your customers expect!

Key reasons Prudential's Positive Image Program influences your customer's perception of your company's image:

- Enhances Morale and Your Company's Team Appearance
- Provides Ease of Identification
- Enhances Products and Service Quality Look
- Shows Confidence and Competence
- Reinforces Trust, Credibility and Attentiveness
- Is a Well Received Employee Benefit

The image your employees and facilities project defines your business. Because a positive first impression in business is critical, you want your business well represented.

CALL US: 800-767-5536



WHY PRUDENTIAL?

When you choose Prudential Overall Supply for high-quality work uniform rentals, leases, cleaning and textile services, you are choosing our dedication to the finest materials, workmanship, and reliability in the industry.



OUR MISSION

Prudential Overall Supply is committed to excellence in:

1. Delivering quality service and products that meet or exceed customer requirements and earn customer satisfaction.
2. Developing all team members to achieve their full potential.
3. Providing a safe, clean and efficient work environment.
4. Conducting all business relationships with integrity.

As we accomplish this, we will grow, retain our customers and prosper.

The Prudential Advantage

ABOUT US

Imagewear - Customization	2
Rental - Lease - Purchase	3
ShopPrudentialUniforms.com	4
National Account Management Program	6
Prudential Cleanroom Services	7
Sustainability	8
Complete Service Cycle	10
Prudential's Promise	92
We Are Different	94

APPAREL SERVICES

Work Wear Shirt with Mimix™	12
Oilblok Technology Work Wear Shirt	16
Work Wear Shirts	18
Motorsports / Automotive Work Shirts	24
Career and Casual Apparel Shirts	30
Industrial Pant with Mimix™	32
Industrial Pants	34
Performance Shop Pants	36
Cargo Pants	37
Cellphone Pocket Pants	38
Career and Casual Pants	39
Jeans	40

PROTECTIVE APPAREL

Protective Apparel	41
Enhanced Visibility Safety Apparel	45
High-Visibility Safety Apparel	46
Outerwear & Coverings	47

FOOD / HACCP APPAREL

Culinary Apparel	52
HACCP Apparel	59

MEDICAL APPAREL

Medical Apparel	62
-----------------	----

FACILITY SERVICES

Facility Services	66
Mops	67
Microfiber Systems	68
Cleaning Chemicals	70
Storage Systems	72
Towels	74
Napkins	76
Branded Dispenser Program	77
Restroom Paper Products	78
Hand Care Products	81
Trash Can Liners & Urinal Mat	84
Air Freshener Products	85
Disposable Gloves	86
Facility Mat Solutions	88

WASH SYMBOLS	IL Industrial Laundry
	LS Light Soil
	CG Clean Green

IMAGEWEAR - CUSTOMIZATION



IMAGEWEAR

First impressions are formed in seconds. The right uniform program ensures your brand image will be enhanced from the first smile or handshake.

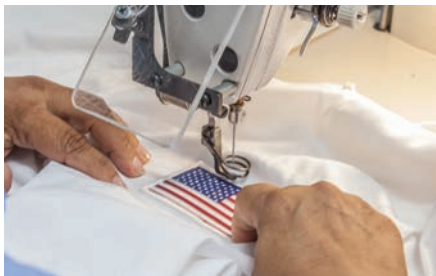
Company imagewear provides increased security, employee confidence and teamwork as well as the assurance that customers will easily identify your employees.

The service support provided by our trained and certified Customer Sales Representatives make your managed uniform program effortless.



PERFECT FIT

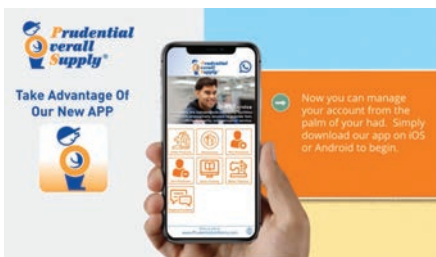
Quality program engineering and employee fit sessions along with ongoing customer contact allows Prudential the opportunity to continually evaluate our products and services to ensure the right fit for your team.



CUSTOMIZING

Each employee is a walking billboard. Therefore, your logo must look just right. Prudential Overall Supply uses state-of-the-art equipment that enables us to create the best look for your company.

- Custom Logos
- Embroidery
- Ink Jet



PRUDENTIAL'S MOBILE APP

Our FREE Mobile APP lets you order, cancel or repair uniforms quickly and easily. In addition, the Prudential app facilitates new product adds, sales catalog access and a tool for comments, feedback and requests 24/7.



WEBSITE

Visit our website to learn more about what we can do for your company's image at PRUDENTIALUNIFORMS.COM

RENTAL - LEASE - PURCHASE

Businesses of all types, rent, lease and purchase Prudential Overall Supply uniforms. These companies know the many inherent benefits a Prudential uniform program provides; brand identity, team building, ease of identification, enhanced morale, and provides an excellent employee benefit.

RESPONSIBILITY	RENTAL	LEASE	PURCHASE
Laundering & Delivery	POS	Employee	Employee
Garment Inspection	POS	Employee	Employee
Garment Repairing	POS	POS	Employee
Damage or Loss	POS	POS	Company
Size Changes	POS	POS	Company
Apparel Upgrades	POS	POS	Company
Wearer Communications	POS	POS	Company
Program Management	POS	POS	Company
Inventory Maintenance	POS	POS	Company
Locker Storage Systems	POS	POS	Company
Garment Ordering	POS	POS	Company
Shipping & Receiving	POS	POS	Company
Measuring for Sizes	POS	POS	POS



UNIFORM RENTAL SERVICE

A full service uniform rental program from Prudential Overall Supply will provide uniforms and accessories, and will completely manage the many administrative and maintenance program elements.

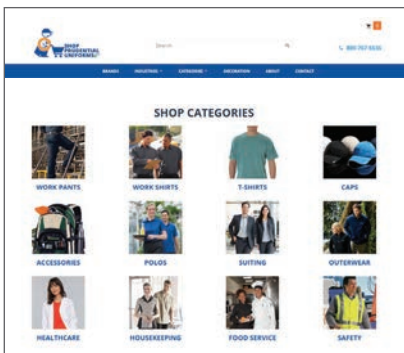
- First, Prudential will advise you on the proper fabric, color, style and type of uniform best suited for the job.
- Then, Prudential will individually measure each employee and issue a set of uniforms specifically for that employee.
- If desired, Prudential will attach your company name and logo on the shirts, jackets and blouses. Prudential can even put the individual uniform wearer's name on the shirt.
- Prudential provides professional cleaning and will make regular deliveries (the same day each week) to pick up the soiled uniforms, inspect for damage, and deliver a clean set of uniforms.
- If one of your employees has gained or lost weight and their uniforms no longer fit, the Customer Sales Representative will measure the employee and return the next week with the proper sized garments.
- During the cleaning process, Prudential will again inspect every garment, repair those that need mending and replace those that have become worn through repeated use.
- Prudential maintains inventory control for each employee, so that you know at all times how many uniforms have been assigned. This is verified through Prudential's barcode tracking.
- All this is provided with no up-front investment by our customers.



UNIFORM LEASE SERVICE

With a Prudential uniform lease program, Prudential will provide the uniforms and the day-to-day management of the uniform program, with our customer responsible for the laundering of the uniforms.

- Prudential will advise you on the proper fabric, color, style and type of uniform best suited for the job.
- Prudential will fit each employee with a set of uniforms specifically issued to the individual employee.
- If desired, Prudential will apply your company name or logo on the shirts, jackets and blouses. Prudential Overall Supply can put the individual uniform wearer's name on the shirt.
- Prudential will make weekly visits to pick up any of the garments that may be torn, missing buttons or worn out due to repeated wear. Prudential will return the following week with the repaired or replacement garments.
- All this is done with no up-front investment by our customers.



UNIFORM PURCHASE

Prudential Overall Supply's online store, provides a full range of uniform and promotional options.

- Prudential will distribute the uniforms and accessories to your employees.
- Prudential will customize the garment with your company's name or logo and even add the individual employee names, if desired.
- With a uniform purchase program the customer is responsible for all maintenance and laundering of their uniforms.

Visit our online store and shop direct at SHOPPRUDENTIALUNIFORMS.COM

ONLINE UNIFORM STORE



INDUSTRIAL



HEALTHCARE



CORPORATE



HOSPITALITY

Our online store offers thousands of image apparel choices for all shoppers.

- All online customers can browse and pay via credit card at checkout.
- Current Prudential customers can establish credit accounts to make online store purchases.
- Larger volume customers can setup Preferred Customer sites for repeat orders.



Don't forget to follow us to get the inside scoop on NEW products and deals!



Join our email list and never miss out!



Prudential Overall Supply carries an extensive collection of uniform brands by trusted names. Whether you need uniforms for a fleet of delivery service employees, or heavy-duty protective gear like bibs and coveralls for your manufacturing crew, you'll find everything you need on our site. Prudential chooses apparel brands with established reputations for exceptional craftsmanship and durability. You can be confident that the apparel you purchase through our store will be functional, comfortable, and long-lasting.

BRANDS YOU CAN TRUST



and more...

IT PAYS TO BE A PREFERRED CUSTOMER!

VOLUME DISCOUNTS & SEAMLESS ORDERING
AT YOUR FINGERTIPS!

FASTER PROCESSING & TURN AROUND
TIMES WITH DIRECT ORDERING!

PAY BY CREDIT CARD OR PURCHASE ORDER,
YOUR CHOICE!

CUSTOMIZED PREFERRED SITE
WITH YOUR APPROVED LOGOS!

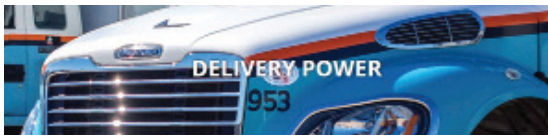
NATIONAL ACCOUNT MANAGEMENT PROGRAM



Apparel Services Network (ASN) is committed to being the premier provider of uniform and textile services to businesses throughout North America requiring national service coverage.

MISSION:

- Customer loyalty and satisfaction earned by exceeding expectations.
- Inspired people committed to the pursuit of excellence.
- Relationships based on trust, honesty and integrity.



ASN ADVANTAGES

- Rental, Lease & Direct Purchase Programs
- National Cleanroom Laundry Programs
- Continuous Garment Upgrade
- Direct Embroidery
- Garment Tracking System
- Garment Repair System
- Quality Control
- Centralized Billing

COMMUNICATION

- On-site daily or weekly service hours
- Customer questionnaires
- Customer Service Program Visitations
- 24 hour inquiry response time

DELIVERY POWER

- Strategically Located Processing Facilities
- Emergency Response Capabilities

OPTIONS

- Rental
- Lease
- Purchase

PRODUCTS

- VF: Our Garment Manufacturing Partner is the Worlds largest apparel manufacturer
- Committed to comfort for each wearer with TouchTex™ technology
- ASN's core national product line

CUSTOMER SERVICE

- Quick 24 hour Response
- Customer Management Program
- Routine visits by top ASN Management
- Active solicitation of customer feedback
- Database of customer activity maintained
- 800 customer service number
- On-site, daily or weekly service hours available



TRUSTED BY LEADERS AS THEIR FIRST CHOICE!

Since 1960 Prudential Cleanroom Services has remained first in Cleanroom Laundry Processing Services for critically controlled environments.

**Prudential
Cleanroom
Services®**

BUILDING RELATIONSHIPS

- Prudential people work with your teams to develop and modify your unique requirements throughout your business process cycles. Many Prudential customer relationships span decades.

ACCOUNTABILITY

- Exclusive Validated Garment Tracking System (GTS) RFID/Barcode Technology
- RFID/Barcode Technology: Our Validated GTS RFID/Barcode Technology was developed in coordination with our customers. Our ongoing evaluation of this system, and the consistent input from its users ensures the GTS RFID/Barcode Tracking System represents the latest technology.
- GTS RFID/Barcode Tracking System provides our customers with a complete account history report for each garment from installation to any repairs. It also tracks usage analysis by RFID/Barcode unique tracking number, department and distribution point.

COMMITMENT TO THE CONTAMINATION CONTROL INDUSTRY

- Committed to IEST standards' development and participation, cleanroom laundry processing technology advances and innovative service offerings.
- Prudential is also invested in the success of technology companies. This is our business and not a small division like some other industry operators.

EXPERIENCE

- Prudential has provided uninterrupted cleanroom laundry service to our customers.
- Prudential customers have NEVER experienced a cleanroom plant production service failure.
- Prudential's service team is the most experienced in the industry since 1960.

AVAILABILITY

- The high-quality services Prudential delivers each week are thanks in part to our one-of-a-kind Distribution Center. It is the heart of our operations that ensures we remain the leading uniform service, cleanroom and facility services provider in North America.
- Our Distribution Center processes millions of garments annually. Our Distribution team of dedicated employees can easily fulfill garment order requirements. The team also applies name tags, company emblems, direct embroidery, and RFID/barcodes as required by each customer's specific order.
- We offer centralized stock for industrial and cleanroom garment customers. Our Distribution Center receives and processes new customer garment orders as well as reusable garment orders for all existing client requirements.

STERILITY ASSURANCE

- Provides sterilized cleanroom garments, mops and goggles to customers with aseptic environments.
- Ensures the sterility of its products through strict compliance to cGMPs and through validation of the sterilization process in accordance with current ANSI/AAMI/ISO11137 guidelines to a SAL of 10⁻⁶.

CAPACITY & CAPABILITIES

- Unmatched National network of direct service cleanroom laundry service facilities.
- This network represents the largest domestic throughput and capacity capabilities.
- All of Prudential's domestic cleanroom laundry processing facilities have a ISO 9001 certified Quality Management System.
- All are strategically located to augment each other in the event of a catastrophic event.

- High Density ESD Garments
 - Sterile & Non Sterile
- ESD Coveralls, Knee High Boots & Hoods
- NFPA 70E FR Garments
- Flocks
- Shoe Covers
- Sterile Goggles
- Face Mask
- Sterile Mops



SUSTAINABILITY

PROVIDING SUSTAINABLE BUSINESS VALUE

Prudential Overall Supply is committed to environmental stewardship and using our resources responsibly:

By choosing Prudential you are choosing a Clean Green Certified Industrial Laundry Provider.

Prudential uses less water and less energy through high-capacity washing, drying and finishing equipment. So, Prudential's Clean Green processes are far more efficient than non-certified processes.

Choosing Reusable Textiles over Disposable Products is the responsible and greener choice.

A MESSAGE FROM OUR CHAIRMAN

"Since our Company's beginning in 1932, one thing that has remained the same is Prudential Overall Supply's commitment to providing reusable textile products and services. These reusable solutions have been instrumental in helping preserve the scarce resources that we all share. Today, reusable textiles continue to be a better environmental alternative compared to disposable products. This is especially true when comparing Prudential's large scale laundry process versus home wash."

DAN CLARK
Chairman of the Board



GREENER MEANS BETTER

Our customers help save the environment by using reusable textile products provided by a Clean Green certified laundry service provider

CLEAN GREEN CERTIFICATION

Prudential Overall Supply is the First Major Industrial Laundry Chain Worldwide to Earn TRSA Clean Green Certification

First multi-location laundry operation that Textile Rental Services Association (TRSA) has certified to its Clean Green international standard.

The Prudential chain has met TRSA's requirements for achieving efficiencies in water and energy conservation and adopting best management practices for reusing, reclaiming and recycling resources.

The certification gives Prudential's customers third-party verification that the uniforms, floor mats, towels, mops and other reusable textiles that they get from Prudential are laundered in an environmentally friendly manner.

WHY USE A CLEAN GREEN CERTIFIED LAUNDRY?

Using reusable textile products as opposed to their disposable alternatives that generate more solid waste.

Demanding that your suppliers operate as efficiently as possible to conserve natural resources and minimize their environmental impact.

WHAT MAKES A LAUNDRY CLEAN GREEN?

- Recovering heat from drained hot water and heat dispersed from the process of warming water.
- Recapturing drained water from rinses for reuse.
- Using environmentally friendly detergents.
- Removing solids and liquids from wastewater.
- Re-routing trucks to save vehicle fuel.
- Solar energy and energy-efficient lighting.
- Recycling programs.
- Spill prevention plans.
- Preventive maintenance.
- Third Party Verification

Providing and protecting what is vital:



Clean Water



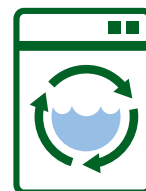
Abundant Energy



Carbon Footprint Reduction



Reducing Waste Stream



CG Clean Green

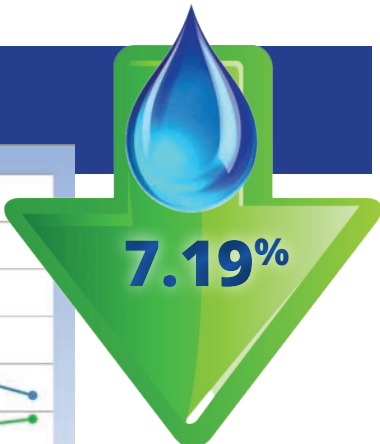
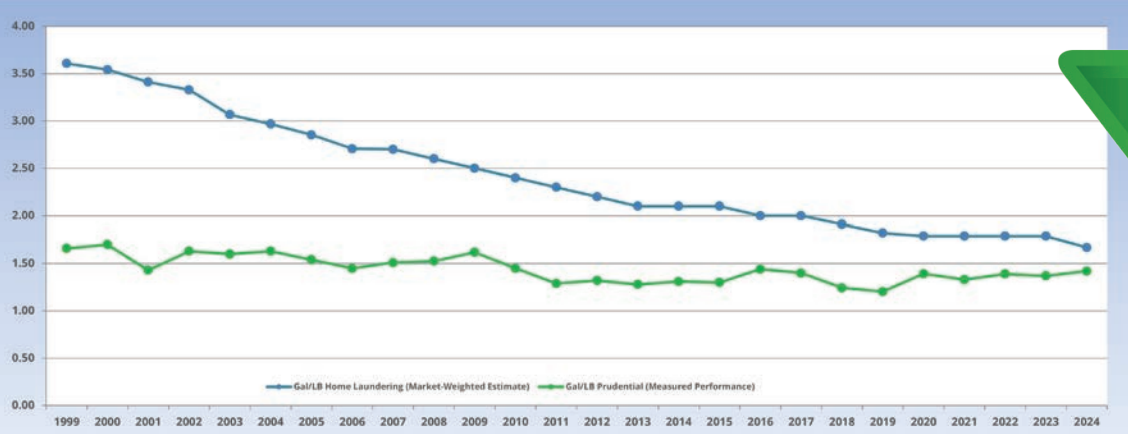
Clean Green products are indicated with the above symbol.

CLEAN GREEN
TRSA CERTIFIED

OUR ENVIRONMENT PERFORMANCE VS. HOME WASH OPL

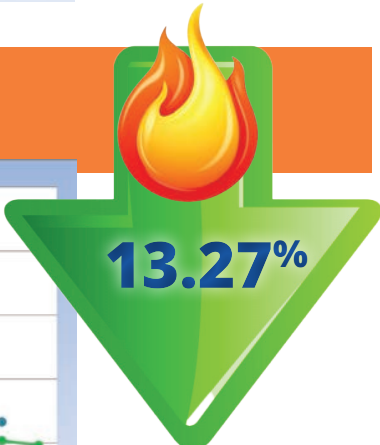
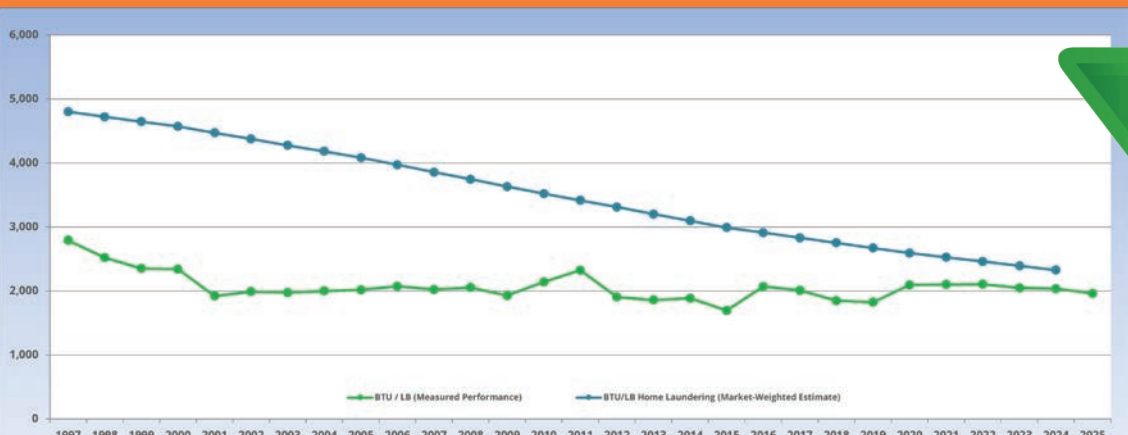
WATER REDUCTION

Water Use in Gallons Per Pound of Laundry



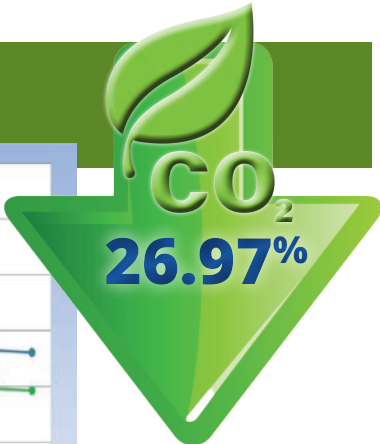
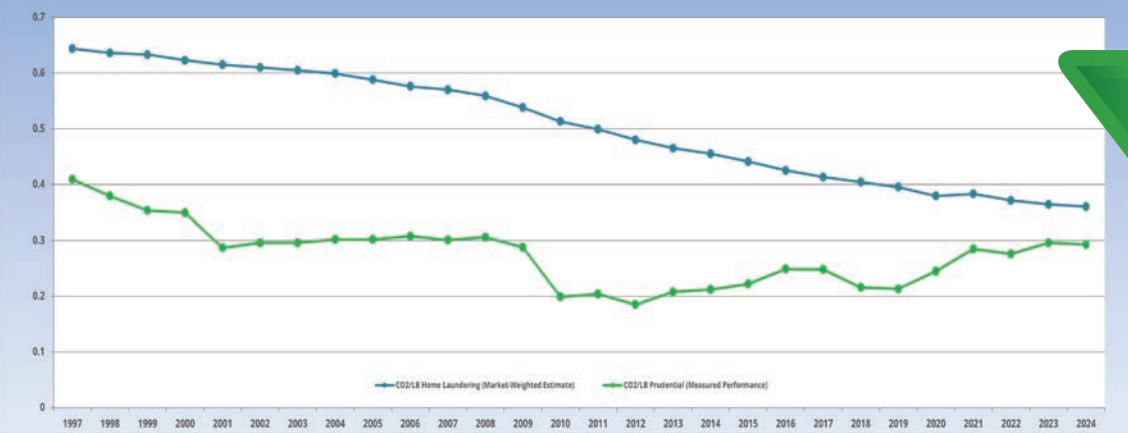
ENERGY CONSUMPTION REDUCTION

Energy Used Per Pound of Laundry



CARBON REDUCTION

Carbon Footprint of Laundry Processing



COMPLETE SERVICE CYCLE



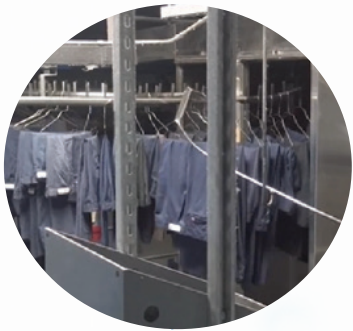
1. PICK UP

Your Customer Sales Representative carries a device to facilitate any service adjustment requests. The invoice is completed on the device allowing your CSR to make requested adjustments on-site. An authorized signature is then captured.



2. GARMENTS ARRIVE AT FACILITY

Soiled garments are pushed into facility by your Customer Sales Representative with RFID tags.



8. FINISHED PANTS

Professionally finished.



7. FINISHED SHIRTS

Professionally finished.



9. IN-LINE REPAIR

The garment repair stations are located within the process flow. The eye opener repair tag allows your employee to point out specific repair needs. Repaired garments are delivered on the next scheduled delivery.



10. INDIVIDUAL GARMENT RFID

Newly established accounts will have the ability to be RFID scanned. Existing accounts will be RFID scanned as RFID tags are added to customer accounts.



“Hi, I’m Clark, one of your Customer Sales Representatives. Is there anything else we can do for you today?”

* RFID tags are being applied for new accounts and for replacements for existing accounts. This process will continue until all garments are RFID tagged.

CALL US: 800-767-5536

COMPLETE SERVICE CYCLE



3. PLACE INTO SCAN MACHINE

The cart is pushed into the bulk RFID scan machine to record quantity picked up.*

ISO COMPLIANT

With ISO compliant multi-read, Ultra High Frequency technology, it is possible to read an entire bundle at once.



4. SOIL SORT

Garments are sorted by the type of fabric, type of soil and if special processing needs are necessary.



6. DRYING

The drying process is conducted by utilizing energy efficient equipment calibrated to gain maximum garment life.



5. WASHING

- We process by soil classification.
- Computerized water wash equipment.



11. SCANNING RFID TAG

Final RFID scan confirms that 100% of customer's garments are ready to be returned to customer's facility.



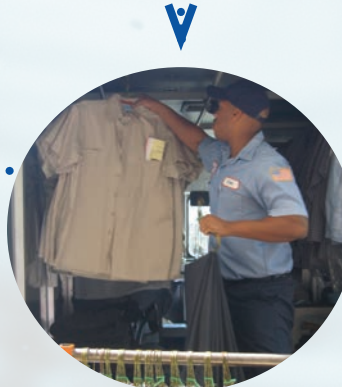
12. DISTRIBUTION / QUALITY ASSURANCE

Prudential employs final Quality Assurance Inspectors to ensure 100% complete delivery.



14. DELIVERY TO CUSTOMER

The garments are delivered by the Customer Sales Representative to your location. The garment RFID tags verify what was picked up is delivered as promised; cleaned, repaired and finished.



13. TRUCK IS READY FOR DELIVERY

Your garments are loaded into the delivery truck and the RFID tags are verified one last time to ensure complete delivery.

WORK WEAR SHIRT WITH MIMIX™

REVOLUTIONARY WORK WEAR SHIRTS MOVES AND STRETCHES WITH YOU



- **Increased Performance**
- **Freedom of Movement**
- **Elevated Image**

powered by



By analyzing and understanding the relationship between movement of the human body and how clothing inhibits range of motion, RED KAP® has designed an apparel solution that increases freedom of movement without sacrificing durability. RED KAP® with MIMIX™ revolutionizes workwear apparel by providing improved comfort and mobility for physically active people. These work wear shirts utilize a patented, science-based design featuring lightweight stretch panels that are placed where the greatest impact can be made to your mobility, efficiency, and performance.

YOUR SHIRT SHOULD REFLECT YOUR COMPANY IMAGE. AFTER ALL, IT ONLY TAKES SECONDS TO MAKE A FIRST IMPRESSION

Go ahead. Put it to the test today and discover the MIMIX™ difference.

WORK WEAR SHIRT WITH MIMIX™ FEATURES



FEATURES & BENEFITS

- Specially designed FLEX PANELS increase your freedom of movement.
- Durable RIPSTOP FABRIC on work shirts is 75% STRONGER than other poplin work fabrics.
- PREMIUM, PROFESSIONAL LOOK improves customer perception and fosters employee pride.
- MOISTURE WICKING FINISH on work shirts draws moisture away from the body.
- PERFORMANCE FLEX FABRIC provides ADDITIONAL BREATHABILITY where you need it most.



WORK WEAR SHIRT WITH MIMIX™



PREMIUM, PROFESSIONAL LOOK improves customer perception and fosters employee pride.



Specially designed **FLEX PANELS** increase your freedom of movement.



Durable **RIPSTOP FABRIC** used in work shirts is 75% **STRONGER** than other poplin work fabrics.



MOISTURE WICKING FINISH on work shirts draws moisture away from the body.



PERFORMANCE FLEX FABRIC provides **ADDITIONAL BREATHABILITY** where you need it most.



MIMIX™

offered by



The specially-placed flex panel is made with lightweight mesh fabric that is extra durable and breathable too.

78442799

Stretch and reach without your clothes holding you back.

WORK WEAR SHIRT WITH MIMIX™



78441699

WORK WEAR SHIRT WITH MIMIX™ ILCG

- Two-piece, lined, banded, top-stitched collar with sewn-in stays
- Two button-thru, hex style chest pockets with bar tack reinforcement and pencil stall on left chest
- Industrial-friendly ripstop fabric with Touchtex™ technology offers superior color retention, soil release, and wickability
- Pre-cure durable press wrinkle resistant finish
- Matte melamine break-resistant buttons for durability and modern look
- Updated fit and patented color-matched MIMIX™ stretch polyester mesh panels on back enhance appearance and dramatically improve mobility
- Performance mesh provides additional breathability where you need it most

Body: 4.25 oz. Ripstop, 65% Polyester / 35% Cotton

MIMIX™ Panels: 3.8 oz. Performance Mesh, 100% Polyester

Sizes: (Reg) S - 4XL



78440899
BLACK



78441699
CHARCOAL



78442799
GREY



78444999
LIGHT BLUE



78444499
NAVY

OILBLOK TECHNOLOGY



BLOK
TECHNOLOGY

offered by



IT KEEPS OIL OUT AND BREATHABLE COMFORT IN.



Design, Performance and Technology are hard at work in this great new work shirt. It's sure to not only boost employee morale and performance, but turn a few customer heads, as well.



OilBlok technology curbs the toughest oils and fluids from setting in – and it's only available from Red Kap.



Touchtex™ technology means breathable comfort, lasting colors and stain resistance.



Ripstop fabric is lightweight and breathable, yet 75% stronger than common poplin workwear.



Flex stretch panels offer improved mobility and breathability for unrivaled on-the-job comfort.



Underarm mesh gussets deliver increased range of motion and breathable comfort.



Utility pocket on left sleeve keeps tools and gauges close at hand.



Specialty chest pockets provide additional storage for essential items.



Covered snaps keep a car's perfect paint job polished and protected.



Scooped hem provides maximum coverage while looking professional tucked in or left out.



Mesh-lined banded collar looks professional while keeping cool and comfortable.

powered by



OILBLOK TECHNOLOGY WORK WEAR SHIRTS



78952399

WE ARE PROUD TO OFFER THIS REVOLUTIONARY TECHNOLOGY TO FIT YOUR TEAM!



78952499



784424



78443B

OILBLOK WORK SHIRT ILCG

- Convertible collar with stays
- Pockets with pencil stall

4.25 oz., 65% Polyester / 35% Cotton

Stretch Panels: 3.8 oz. Stretch Knit, 100% Polyester

Sizes: (Reg) S - 6XL



78952399
BLACK WITH ROYAL BLUE



78952499
BLACK WITH CHARCOAL



78443B
ROYAL BLUE WITH BLACK



784424
CHARCOAL WITH BLACK

ZEROSKRATCH
Make Your Mark Without Leaving One

A man with a beard and short brown hair, wearing a light blue long-sleeved button-down work shirt, is looking off to the right. He is standing in a warehouse or factory setting with shelves of boxes in the background. The lighting is bright and even.

WORK WEAR SHIRTS

From factory floor
to corporate boardroom

**YOUR SHIRT SHOULD REFLECT YOUR
COMPANY IMAGE. AFTER ALL, IT ONLY TAKES
SECONDS TO MAKE A FIRST IMPRESSION**

WORK WEAR SHIRT FEATURES



1. Mitered bartacked pockets reduce abrasion and wear on pockets.
2. Lined convertible collar with permanent stays maintain finished appearance, collar shape and smoothness for a better fit.
3. Double yoke with concealed stitching provides improved fit, comfort, neat appearance and reduced abrasion.
4. Bartacks at stress points provide maximum strength in high stress areas.
5. Overlocked safety stitch side seams assure maximum seam strength.
6. Lined cuffs smoother appearance & durability.
7. Stitched down front placket helps prevent soil entrapment, reduces front hem creasing & provides additional strength for buttons.
8. Double-turn fishtail hem prevents stitching from unraveling and gives a nice "stay tucked" appearance.



TOUCHTEX™ technology with superior color retention, soil release and wickability.
Prudential garments define comfort...

Get "Comfort"—our innovative solution puts REAL Comfort in the workplace.

PERMANENT SOFTNESS

- Comfortably soft and gets softer with every wash.

MOISTURE MANAGEMENT

- Stay cool and dry even in the stickiest situations.

DURABILITY

- Our fibers maintain muscle thru advanced technology.

COLOR PROTECTION

- Your uniform color should, stay uniform. Our long lasting color maintains your professional image.

PERMANENT STAIN RELEASE

- Don't worry about shirt stains, from greasy burgers, mud or even burned motor oil...it all comes out in the wash.

WORK WEAR SHIRTS



WOMEN'S INDUSTRIAL WORK SHIRT

Like you, this shirt is right at home in the workplace. Soft, comfortable Touchtex™ fabric technology lets you work around oil, grease and dirt without wearing them. The feminine fit will flatter but still let you get down to business. A handy pencil pocket, double-stitched DuraSeams and bartacked cornerless pockets all tell the tale of workwear that really is perfect.



WOMEN'S INDUSTRIAL WORK SHIRT **ILCG**

- Five buttons plus gripper at neck
- Two-piece, lined, sewn-in stays
- Stitched-down front
- Pre-cure durable press with soil release and wickable finish
- Two button-thru, hex-style pockets with angled bartacks, bartacked pencil stall in left pocket

4.5oz. Poplin, 65% Polyester / 35% Cotton

Sizes: (Reg) S - 3XL



194249
LIGHT BLUE



194279
WHITE



194244
NAVY

WORK WEAR SHIRTS



784244



784244
BACK

MEN'S INDUSTRIAL WORK SHIRT **ILCG**

- Touchtex™
 - Convertible collar with stays
 - Pockets with pencil stall
- 4.25 oz., 65% Polyester / 35% Cotton
 Sizes: (Reg) S - 6XL



784279
WHITE



784266
SPRUCE
GREEN



784216
CHARCOAL



784271
LIGHT TAN



784239
LIGHT GREEN



784227
LIGHT GREY



784251
POSTMAN
BLUE



784244
NAVY



784246
ORANGE



784208
BLACK



784249
PETROL BLUE



784256
RED



Comfortable FIT

- Longer Sleeves - 1 1/4"
- Longer Tail - 1" (easier to stay in when bending and stretching)
- DEEPER YOKE - 1 1/2"

WORK WEAR SHIRTS



MEN'S MINI-PLAID WORK SHIRT **ILCG**

- Touchtex™
- Upgraded styling with center front placket
- Banded collar with stays
- Updated rounded pocket
- Relaxed fit

3.6 oz., 65% Polyester / 35% Cotton

Sizes: S - 2XL & Sleeve Length



804235
GREY/BUE



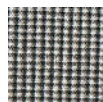
804237
WHITE/BLUE

MEN'S MICRO-CHECK WORK SHIRT **ILCG**

- Touchtex™
 - Pockets with pencil stall
 - Banded collar with stays
- 3.75 oz., 65% Polyester / 35% Cotton
Sizes: (Reg) S - 2XL



78405842
BLUE/
CHARCOAL



78402219
HUNTER
GREEN/KHAKI



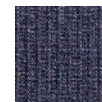
78400819
KHAKI/BLACK

MEN'S GEOMETRIC MICRO-CHECK WORK SHIRT **ILCG**

- Touchtex™
 - Pockets with pencil stall
 - Convertible collar with stays
- 3.9 oz., 65% Polyester / 35% Cotton
Sizes: (Reg) S - 2XL



78421313
DENIM BLUE/
LT. BLUE



78422713
GREY/BLUE

Comfortable FIT

- Longer Sleeves - 1 1/4"
- Longer Tail - 1" (easier to stay in when bending and stretching)
- DEEPER YOKE - 1 1/2"

78427938



78424423



7833711E



INDUSTRIAL STRIPE WORK SHIRT **ILCG**

- Touchtex™
 - Convertible collar with stays
 - Pockets with pencil stall
- 4.25 oz. Yarn Dyed 65% Polyester / 35% Cotton

MEN'S LONG SLEEVE
 Sizes: (Reg) S - 4XL
 Colors: Lt. Blue w/White,
 White w/Charcoal, Blue w/White

MEN'S LONG SLEEVE
 Sizes: (Reg) S - 5XL
 Colors: Grey w/Blue

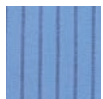
MEN'S LONG SLEEVE
 Sizes: (Reg) S - 6XL
 Colors: Petrol Blue w/White



80421623
GREY W/BLEU



78351127
LT BLUE W/
NAVY



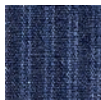
78421120
PETROL BLUE
W/NAVY



78427938
GREY W/
WHITE

MEN'S DURASTRIPE WORK SHIRT **ILCG**

- Touchtex™
 - Convertible collar with stays
 - Pockets with pencil stall
 - Moisture management, color stay and stain release
- 4.25 oz., 65% Polyester / 35% Cotton
 Sizes: (Reg) S-3XL



78424423
NAVY/LT. BLUE
TWIN STRIPE

Comfortable FIT

- Longer Sleeves - 1 1/4"
- Longer Tail - 1" (easier to stay in when bending and stretching)
- DEEPER YOKE - 1 1/2"

MEN'S WRINKLE RESISTANT 100% COTTON

UNIFORM SHIRT **ILCG**
 5.25 oz., 100% Cotton Pre-Shrunk Twill
 Sizes: (Reg) S - 3XL



7833441E
NAVY



7833171E
GRAPHITE GREY



783346
ORANGE



7833491E
LIGHT BLUE



7833711E
LIGHT TAN

MOTORSPORTS / AUTOMOTIVE WORK SHIRTS

If you drive it, we probably have the official licensed uniform shirt. All the brands you need are right here, and Prudential even offers you some non-branded options for dealerships and autoshops.



PRUDENTIAL OFFERS



RED KAP® IS THE LEADING MANUFACTURER OF THE FINEST QUALITY AUTOMOTIVE DEALERSHIP APPAREL.

THE INDUSTRY DEMANDS A SHARP PROFESSIONAL IDENTITY AND WE DELIVER IMAGE WITH STYLE AND COMFORT WITH... TOUCHTEX™ TECHNOLOGY WITH SUPERIOR COLOR RETENTION, SOIL RELEASE AND WICKABILITY.

MOTORSPORTS / AUTOMOTIVE WORK SHIRTS



CREW SHIRT COLLECTION ILCG

- Ripstop fabric
 - Soil release
 - Moisture management
 - Great color retention
 - ZEROSKRATCH™ concealed, no-scratch, button front placket
 - Straight hem for easy untucked look
 - Sleeve utility pocket
- 4.25 oz., Poplin, 65% Polyester / 35% Cotton
 Sizes: (Reg) S - 3XL



784419CF
 CHARCOAL /
 ROYAL BLUE



784424CF
 BLACK /
 CHARCOAL



784498CF
 BLACK / RED

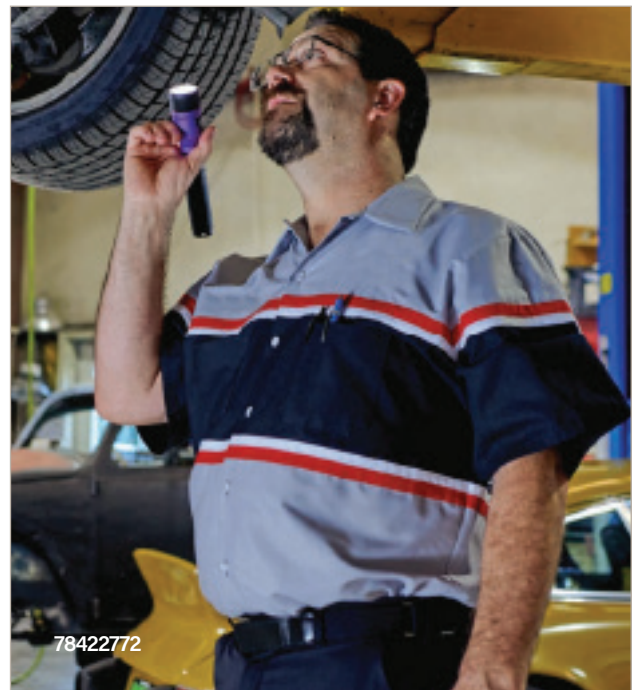


MOTORSPORTS COLLECTION SHIRT ILCG

- Touchtex™
 - Banded collar with stays
- 4.25 oz., Poplin, 65% Polyester / 35% Cotton
 Sizes: (Reg) S - 5XL

78421553
 BLACK / GREY

78426353
 NAVY / POSTMAN BLUE



GENERIC PROGRAM TECHNICIAN SHIRT ILCG

- Touchtex™
 - Convertible collar with stays
- 4.25 oz. Poplin, 65% Polyester / 35% Cotton
 Sizes: (Reg) S - 4XL

78422772
 GREY, BLACK / RED & WHITE STRIPING

MOTORSPORTS / AUTOMOTIVE WORK SHIRTS



AUDI

TECHNICIAN SHIRT **ILCG**

- Touchtex™
- Concealed, no-scratch, button-front placket
- Ripstop fabric is lightweight and breathable but extra durable and 75% stronger than other poplin workwear fabrics
- Sewn-in collar stays
- A handy sleeve pocket and pencil pocket on the left chest
- Strategically placed cornerless hex pockets resist dirt and lint buildup
- Bartacks add extra strength to prevent rips
- Straight-bottom hem looks great tucked in or left out

4.25 oz. Ripstop, 65% Polyester / 35% Cotton
 Sizes: (Reg) S - 4XL

7848042I
BLACK / SILVER ACCENT

BUICK GMC

TECHNICIAN SHIRT **ILCG**

- Concealed, no-scratch, button-front placket
- Convertible collar with sewn-in stays
- Button-thru right chest pocket
- Left chest pocket with double pencil stall
- Utility pocket on left sleeve for smaller objects

65% Polyester / 35% Cotton Panels: 100% Polyester
 4.25 oz. Ripstop Panels: 3.8 oz. Stretch Knit
 Sizes: (Reg) S-3XL

784204GM
CHARCOAL / GREY ACCENT



CADILLAC

TECHNICIAN SHIRT **ILCG**

- OilBlok Technology
- Ripstop Fabric
- Flex stretch panels
- Underarm mesh gussets
- Utility pocket on left sleeve
- Covered snaps
- Scooped hem looks great tucked in or left out
- Cadillac logo on left chest pocket and back yoke
- Right and left chest pockets, with pencil stall on left

65% Polyester / 35% Cotton, Flex Panels: 100% Polyester
 4.25 oz. Ripstop, Flex Panels: 4.2 oz. Performance Mesh
 Sizes: (Reg) S-3XL

784408CD
BLACK / NAVY



CHEVROLET

TECHNICIAN SHIRT **ILCG**

- Concealed, no-scratch, button-front placket
- Convertible collar with sewn-in stays
- Button-thru right chest pocket
- Left chest pocket with double pencil stall
- Utility pocket on left sleeve for smaller objects

65% Polyester / 35% Cotton Panels: 100% Polyester
 4.25 oz. Ripstop Panels: 3.8 oz. Stretch Knit
 Sizes: (Reg) S-3XL

784204CV
CHARCOAL / YELLOW ACCENT

MOTORSPORTS / AUTOMOTIVE WORK SHIRTS



ZEROSKRATCH
Make Your Mark Without Leaving One

**FORD
TECHNICIAN SHIRT ILCG**

- Touchtex™
- Stocked with Ford logo on back yoke
- New Ripstop Fabric is lightweight and breathable but extra durable
- ZEROSKRATCH™ concealed, no-scratch, button front placket
- A straight bottom hem offers maximum comfort and style and looks great tucked in or left out

4.25 oz., Poplin, 65% Polyester / 35% Cotton

Sizes: (Reg) S - 3XL

7842197G

CHARCOAL / ROYAL



ZEROSKRATCH
Make Your Mark Without Leaving One

**HONDA
TECHNICIAN SHIRT ILCG**

- Touchtex™
- ZEROSKRATCH™ concealed, no-scratch, snap-front placket
- Convertible collar with sewn-in stays
- Two hex-style pockets with angled bartacks
- Honda Logo Embroidered above pocket and "H" on right shoulder sleeve

4.25 oz., Poplin, 65% Polyester / 35% Cotton

Sizes: (Reg) S - 3XL

7842446H

LIGHT GREY / HONDA BLUE AND NAVY



**HYUNDAI
TECHNICIAN SHIRT ILCG**

- OilBlok Technology
- Ripstop Fabric
- Flex stretch panels
- Underarm mesh gussets
- Utility pocket on left sleeve
- Covered snaps
- Scooped hem looks great tucked in or left out
- Hyundai logo on back yoke
- Right and left chest pockets, with pencil stall on left

4.25 oz., Poplin, 65% Polyester / 35% Cotton

Sizes: (Reg) S - 3XL

784823

BLACK / ROYAL BLUE



**KIA
TECHNICIAN SHIRT ILCG**

- Touchtex™
- Ripstop Fabric
- Full underarm gussets
- Sewn-In collar stays
- Covered snaps
- Cornerless Hex pockets
- Bartacks add extra strength to prevent rips
- A Straight-bottom hem looks great tucked in or left out
- Double-stitched seams
- Stocked with Kia logo on right back shoulder

4.25oz Ripstop 65% Polyester / 35% Cotton Ripstop Texture

Sizes: (Reg) S - 4XL

784815Kl

BLACK / GREY

MOTORSPORTS / AUTOMOTIVE WORK SHIRTS



LEXUS

TECHNICIAN SHIRT **ILCG**

- OilBlok Technology & Touchtex™
 - Flex Stretch Panels & Sleeve Utility Pocket
 - Banded collar and Covered Snaps
 - Lexus Logo Embroidered logo on center back
- 4.25 oz. Poplin, 65% Polyester / 35% Cotton Ripstop
 Sizes: (Reg) S - 3XL

78480856
 BLACK / CHARCOAL



MAZDA

TECHNICIAN SHIRT **ILCG**

- Touchtex™
 - Banded collar with stays
 - Mazda Logo Embroidered logo on left chest and center back
- 4.25 oz., 65% Polyester / 35% Cotton Ripstop
 Sizes: (Reg) S - 3XL

784808MA
 BLACK



MITSUBISHI

TECHNICIAN SHIRT **ILCG**

- Touchtex™
 - Convertible collar with stays
 - Mitsubishi Logo Embroidered logo above pocket
- 4.25 oz. Poplin, 65% Polyester / 35% Cotton
 Sizes: (Reg) S - 4XL

7842085W
 LIGHT GREY / BLACK
 WITH RED AND WHITE STRIPING



MERCEDES

TECHNICIAN SHIRT **ILCG**

- Left Chest: Metallic Mercedes with Reflective Material
- 4.25 oz. Poplin, 65% Polyester / 35% Cotton
 Sizes: (Reg) S - 3XL

784208MBR
 BLACK / REFLECTIVE MATERIAL

MERCEDES

TECHNICIAN SHIRT **ILCG**

- Left Chest: Metallic Mercedes
- 4.25 oz. Poplin, 65% Polyester / 35% Cotton
 Sizes: (Reg) S - 3XL

784208MC
 BLACK

MOTORSPORTS / AUTOMOTIVE WORK SHIRTS



ZEROSKRATCH
Make Your Mark Without Leaving One

MOPAR

TECHNICIAN SHIRT **ILCG**

- Exclusive OilBlok technology
- Touchtex™ technology
- Logo: Left sleeve and center back neck
- Mesh-lined Racer Collar keeps you cool and comfortable
- Mesh stretch panels and underarm mesh
- Gussets for enhanced cooling and mobility
- Utility pockets on left sleeve
- Chest pockets for additional storage
- Covered snaps keeps paint jobs polished and protected
- Scooped hem for maximum coverage

Fabric: Body - 4.25 oz. Ripstop, Panels - 4.2 oz. Stretch Knit
Blend: Body - 65/35 Polyester / Cotton, Panels - 100% Polyester
Sizes: (Reg) M - 3XL

784823AC2
BLACK / ROYAL



ZEROSKRATCH
Make Your Mark Without Leaving One

MOPAR

EXPRESS LANE SHIRT **ILCG**

- Exclusive OilBlok technology
- Touchtex™ technology
- Mesh-lined Racer Collar keeps you cool and comfortable
- Mesh stretch panels and underarm mesh
- Gussets for enhanced cooling and mobility
- Utility pockets on left sleeve
- Chest pockets for additional storage
- Covered snaps keeps paint jobs polished and protected
- Scooped hem for maximum coverage

Fabric: Body - 4.25 oz. Ripstop, Panels - 4.2 oz. Stretch Knit
Blend: Body - 65/35 Polyester / Cotton, Panels - 100% Polyester
Sizes: (Reg) M - 3XL

784823AE
BLACK / ROYAL



ZEROSKRATCH
Make Your Mark Without Leaving One

NISSAN

TECHNICIAN SHIRT **ILCG**

- Touchtex™
- Banded collar with stays
- ZEROSKRATCH™ concealed, no-scratch, button front placket
- Embroidered logo

4.25 oz., Poplin, 65% Polyester / 35% Cotton
Sizes: (Reg) S - 3XL

784221N6
CHARCOAL / BLACK WITH RED STRIPING



TOYOTA

TECHNICIAN SHIRT **ILCG**

- Touchtex™
- Flex Stretch Panels
- Mesh lined more comfortable racer collar
- Banded collar with stays
- Embroidered logo

4.25 oz., Poplin, 65% Polyester / 35% Cotton
Sizes: (Reg) S - 3XL

784498TT
BLACK / RED ACCENT

CAREER AND CASUAL APPAREL SHIRTS

8042413L



MEN'S POPLIN SHIRT IL

- Button-down collar and left chest pocket
- Back yoke with box pleat and curved tail
- Wrinkle resistant, soil release and easy care

65% Polyester / 35% Cotton, 4 - 4.5 oz.

Sizes: S - 6XL



8042713L
TAN



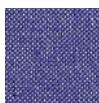
8042443L
NAVY



8042083L
BLACK



8042583L
ROYAL



8042453L
FRENCH BLUE



8042413L
WINE



80429T3L
TITANIUM
GREY



8042793L
WHITE

71429T3L



WOMEN'S POPLIN SHIRT IL

- Button-down collar
- Left chest pocket and bust darts
- Wrinkle resistant, soil release and easy care

65% Polyester / 35% Cotton, 4 - 4.5 oz.

Sizes: XXS - 3XL



7142713L
TAN



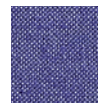
7142443L
NAVY



7142083L
BLACK



7142583L
ROYAL



7142453L
FRENCH BLUE



7142413L
WINE



71429T3L
TITANIUM
GREY



7142793L
WHITE



93437999

MEN'S OXFORD BUTTON DOWN SHIRT LS CG

- Easy care finish
- Box-pleated back with banded collar
- Double-pleated sleeve with tailored placket and cuff

4.25 oz., Combed 60% Cotton / 40% Polyester

Yarn Dyed Oxford

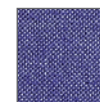
Sizes: S - 6XL



93434999
LIGHT BLUE



93437999
WHITE



93434599
FRENCH BLUE

CAREER AND CASUAL APPAREL SHIRTS



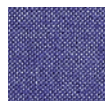
714345

WOMEN'S SOFT COLLAR OXFORD DRESS SHIRT

LS CG

- Easy care finish
- Feminine soft collar
- Box-pleated back
- Double-needle topstitching
- Double-pleated sleeve with tailored placket and cuff

4.25 oz., 60% Cotton / 40% Polyester
Sizes: 6-26



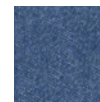
714345EE
FRENCH BLUE



783313

UNISEX DENIM SHIRT **IL CG**

- Button Down Collar
 - Single Front Chest Pocket
 - Available in Long & Short Sleeve
- 6.5 oz., 100% Cotton
Sizes: S - 6XL



783313
DENIM BLUE



207856PA

777556PA

777558PA

Improved the moisture-wicking technology by crafting a flat tricot micropique for a smoother, tighter fabric. Not just a sharp look—it's snag resistant, too.

POLO SHIRT, SOLID, WOMEN'S **IL CG**

- Snag resistant
- Moisture-wicking
- Double-needle stitching throughout
- Tag-free label
- Taped neck
- Self fabric collar
- Open placket
- Armhole accent
- Curved back waist seam for flattering fit
- Side vents

3.8-ounce, 100% Polyester Tricot

Sizes: XS - 4XL



207856PA
RED



207158PA
ROYAL BLUE

POLO SHIRT, SOLID, UNISEX **IL CG**

- Snag resistant
- Moisture-wicking
- Double-needle stitching throughout
- Tag-free label
- Taped neck
- Flat knit collar
- 3-button placket with dyed-to-match rubber buttons
- Set-in, open hem sleeves
- Side vents

3.8-ounce, 100% Polyester Tricot

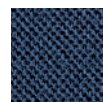
Sizes: XS - 6XL



777508PA
BLACK



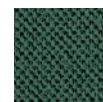
777541PA
MAROON



777544PA
NAVY



777549PA
LIGHT BLUE



777522PA
FOREST GREEN



777579PA
WHITE



777556PA
RED



777558PA
ROYAL BLUE



777516PA
IRON GREY

INDUSTRIAL PANT WITH MIMIX™

REVOLUTIONARY WORK WEAR PANTS

**MOVES AND
STRETCHES
WITH YOU**



- **Increased Performance**
- **Freedom of Movement**
- **Elevated Image**

powered by



By analyzing and understanding the relationship between movement of the human body and how clothing inhibits range of motion, RED KAP® has designed an apparel solution that increases freedom of movement without sacrificing durability. RED KAP® with MIMIX™ revolutionizes workwear apparel by providing optimum comfort and mobility for physically active people. MIMIX™ flex panels are placed where the greatest impact can be made to your mobility, efficiency, and performance.

BUILT FOR THE WAY YOU MOVE.

Bend, stretch, squat and reach without your clothes holding you back.

INDUSTRIAL PANT WITH MIMIX™



PATENTED MIMIX™-INSPIRED PANELS add science-based mobility, breathability and comfort – indicated by label on center back belt loop

US PAT. NO.
10,362,814

BUILT-IN FLEX PANELS

provide superior mobility and a comfortable fit so you can bend, squat, and stretch without restriction

JEAN-STYLE WAISTBAND for added comfort and sleeker look

MATTE BUTTONS for an updated, modern appearance

TRIMMER SEAT & THIGH offers comfort and style

SLIMMER LEG OPEN for professional appearance while still accommodating work boots



783844

MEN'S INDUSTRIAL PANT WITH MIMIX™ ILCG

TOUCHTEX PRO™ with superior color retention and soil release

- Straight fit for clean, professional and modern appearance
- Jean-style waistband with button closure
- Matte melamine break-resistant buttons for durability and modern look
- Slack-style front pockets and two set-in hip pockets; left pocket has button closure
- Patent-pending color-matched MIMIX™ stretch panels strategically placed to maximize mobility and improve comfort on the job
- Wider center back loop

Body: 7.5 oz. Twill, 65% Polyester / 35% Cotton

MIMIX™ Panels: 10 oz. Woven Stretch, 93% Nylon / 7% Spandex

Sizes: 28 - 50 even sizes only



733808
BLACK



733816
CHARCOAL



733844
NAVY

INDUSTRIAL PANTS

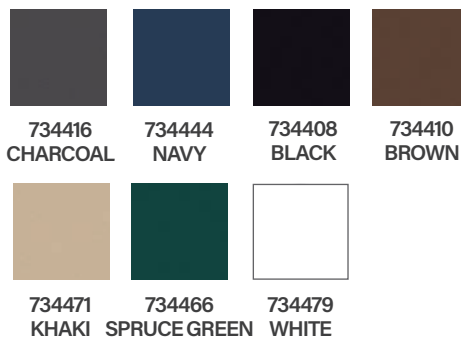


PRUDENTIAL OFFERS RED KAP® PANTS Revolutionizing the iconic work pant



MEN'S INDUSTRIAL PANT **ILCG**

- Touchtex™
 - Front and back pockets
 - Jean-style waistband with button closure
- 7.5 oz., 65% Polyester / 35% Cotton Twill
Sizes: 28 - 54 even sizes only



Red Kap® is raising the standard of the iconic work pant. New elements have been incorporated into the pant that help it exceed the competition as well as elevate the quality of the entire work pant category.

FABRIC UPDATES

- TOUCHTEX PRO™ fabric provides a softer hand for 65/35 bottoms
- Consistent colors and weights
- Color retention
- Darker black

FIT UPDATES

- Lower front rise
- Wider leg opening
- Style consistency

FEATURES UPDATE

- Deeper pocket bags
- Longer belt loops
- Larger front button





7333161E

MEN'S WRINKLE RESISTANT COTTON WORK PANT **ILCG**

- Jean-style waistband with button closure
- 8.5 oz., 100% Cotton Twill
Sizes: 28 - 50 even sizes only



7333161E
CHARCOAL



7333441E
NAVY



709708

WOMEN'S INDUSTRIAL PANT **ILCG**

- Post-cure durable press & wickable finish
 - New ladies easy fit with natural waist
 - Heavy duty brass zipper with decorative button closure
 - Two front top slash drop pockets, one right rear pocket
 - Soft hand twill
- 7.5 oz., 80% Polyester / 20% Cotton
Sizes: 2 - 24 even sizes only



709744
NAVY



709708
BLACK



709716
CHARCOAL



709771
KHAKI

**DON'T
FORGET
THE
BELT!**



SCRATCHLESS LEATHER WORK BELT

- No buckle
 - 100% Leather
- Sizes: Waist: 26 - 52 Even



166508
BLACK

PERFORMANCE SHOP PANTS

TOUCHEX™ TECHNOLOGY with superior color retention and soil release.

Covered waistband button protects paint jobs and surfaces.

The first industrial laundry-friendly STRETCH CANVAS FABRIC.

MEN'S PERFORMANCE SHOP PANT **ILCG**

- Double-needle stitching.
- Invisible stretch waistband expands when needed.
- Wide, reinforced belt loops.
- Reinforced, deep front pocket bags.
- Two jean-style front pockets, two oversized hip pockets, cargo pocket with flap closure on left leg and unique double-pocket design on right leg.
- Reinforced knees with strategically placed darts
- Full inseam gusset.
- Relaxed cut leg fits easily over work boots.

8 oz. stretch canvas,

54% Polyester / 42% Cotton / 4% Spandex

Sizes: 28 - 54 even sizes only



733A08N3
BLACK



733A16N3
CHARCOAL



733A44N3
NAVY



RIGHT SIDE
POCKET



LEFT SIDE
POCKET

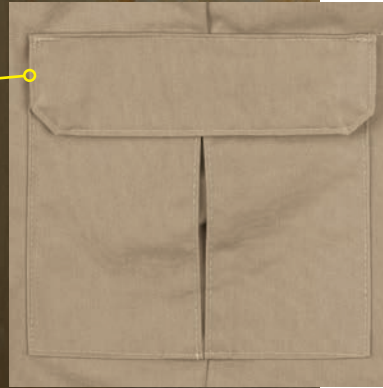


Relaxed, modern fit
that combines the
durability of a work
pant with the comfort
of a jean.

CARGO PANTS



73440899



- Two slack-style front pockets
- Two set-in hip pockets
 - Left has button closure, darts over hip pockets
- Two patch leg pockets
 - Inverted center pleat
 - one-piece pocket flap
 - mitered corners
 - two concealed snap closures



73447102



MEN'S INDUSTRIAL CARGO POCKET PANT **ILCG**

- Two slack-style front pockets, two set-in hip pockets, left has button closure, darts over hip pockets, two patch leg pockets with inverted center pleat, one-piece pocket flap with mitered corners, two concealed snap closures
- Heavy-duty brass ratcheting zipper, button closure
- Waistband is inner lined for body and shape, folder-set band with outlet

7.5 oz. Twill, 65% Polyester / 35% Cotton

Sizes: 30-50 even sizes only



73440899
BLACK



73441602
CHARCOAL



73447102
KHAKI



73444402
NAVY

CELLPHONE POCKET PANTS



734416RK



734416RK

MEN'S INDUSTRIAL CELLPHONE POCKET PANT **IL CG**

- Two slack-style front pockets, two set-in hip pockets, left has button closure, darts over hip pockets for better fit, cellphone pocket on right side seam with concealed closure
- Heavy-duty brass ratcheting zipper, button closure
- Waistband is inner lined for body and shape, folder-set band with outlet

7.5 oz. Twill 65% Polyester / 35% Cotton

Sizes: 28-50 even sizes only



734408RK
BLACK



734416RK
CHARCOAL



734444RK
NAVY

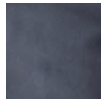
CAREER AND CASUAL PANTS

MEN'S FLAT FRONT POLYESTER EZ FIT WAIST PANT

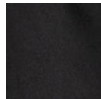
- Traditional fit
- EZ Fit waistband provides an additional two inches of adjustment
- Rubberized gripper waistband keeps shirt tucked in
- Double hook-and-eye closure with brass zipper
- Two front pockets
- Two back pockets

100% Polyester, 6.6 oz.

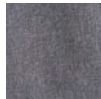
Men's Sizes: 28-64



726444EF
VULCAN
NAVY



726408EF
BLACK



726404EF
GUNMETAL
HEATHER

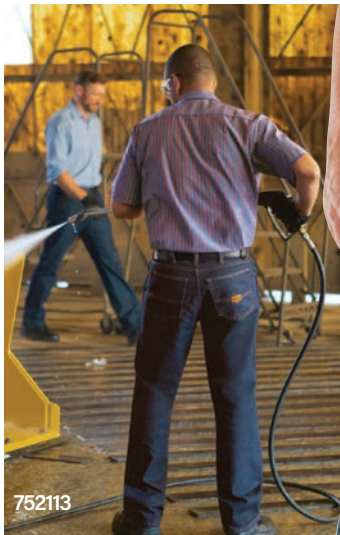


726444EF



More options are offered on our online store!

Check it out and dress your team in the latest Career Apparel.



752113



753311



RED KAP® CLASSIC WORK JEAN **ILCG**

- Classic fit with traditional rise sits at the natural waist
- Slim through the seat and thigh
- Slimmer leg opening that fits over work boots
- Bartacks at stress points for added durability
- Felled outseam
- Decorative stitching on back pockets
- Signature Red Kap® chevron leatherette patch on back pocket
- No rivets

13.75 oz Heavyweight Denim, 100% Cotton
(Now with more indigo warp coverage and added slub character for a more premium look and washdown)
 Sizes: Mens Waist 28-48 even sizes

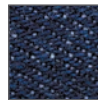


752113
PREWASHED
INDIGO

DICKIES INDUSTRIAL REGULAR FIT JEAN **ILCG**

- Designed for industrial laundries
- Long-lasting premium denim
- Deep front pockets
- Heavy duty ratcheting brass zipper
- 7 keytone belt loops add strength
- Garment washed for softness

13.75 oz Premium Denim, 100% Cotton
 Sizes: Mens Waist 28-48 even sizes



753311
RINSED INDIGO
BLUE



PROTECTIVE APPAREL

PRUDENTIAL OFFERS
Bulwark Protective Apparel





785249

EXCEL FR COMFORTOUCH™ BUTTON FRONT WORK SHIRT **ILCG**

- Two piece, lined collar
- One piece, lined cuff w/button closures
- Hemmed front w/button closure
- Protection: Arc rating ATPV 8.6 calories/cm²



EXCEL FR ComforTouch™

Westex Ultrasoft® Flame-resistant,
7 oz. (235 g/m²), 88% Cotton / 12% Nylon
Sizes: (Reg) S - 3XL



785249
LIGHT BLUE



785244
NAVY



785271
KHAKI



731444

EXCEL FR COMFORTOUCH™ WORK PANT **ILCG**

- Inner lined waistband with button closure
- Two slack-style front pockets,
two set-in hip pockets,
left hip with button closure
- Protection: Arc rating ATPV 12 calories/cm²



Westex Ultrasoft® Flame-resistant,
9 oz. (305 g/m²) Twill, 88% Cotton / 12% Nylon
Sizes: 28-42 even sizes only, Inseam 28-36



731444
NAVY



752013EF

MEN'S STRAIGHT FIT JEAN WITH STRETCH **ILCG**

- Lightweight with stretch
- Pre-washed and sanded for a modern look
- One-piece waistband with metal button closure
(metal is not exposed to skin)
- Larger belt loop and waistband
- Contrast two-toned stitching
- 1/2 gauge inseam and seat seam
- Two patch spade shaped hip pockets and scoop front pockets



Flame-resistant, 12 oz. (405g/m²)
94% Cotton / 5% Polyester / 1% Spandex
Arc Rating ATPV 15 cal/cm²
Sizes: 30-50



752013EF
SANDED
DENIM

100% FR COTTON



58174434

100% FR COTTON FLAME RESISTANT TEAM JACKET

ILCG



- Separating, heavy duty, Nomex® taped brass zipper
- Rib-knit collar, cuff and waistband
- Protection: Arc rating ATPV 45.0 calories/cm²
Flame Resistant, 9 oz. twill, 100% cotton
Insulation-Flame Resistant 12 oz. Two-Layer
Quilted Needle Punch 100% Modacrylic

Sizes: (Reg) S - 3XL



58174434
NAVY



751713

100% FR COTTON MEN'S DENIM JEAN

ILCG



- One piece waistband w/button closure
 - Five jean style pockets
 - Two needle felled seam construction
 - Soft pre-wash comfort and look
 - Protection: Arc rating ATPV 21 calories/cm²
Flame Resistant, 14.75 oz., 100% FR Cotton Denim
- Sizes: 28-42 even sizes only, Inseam 28-36



751713
DENIM



40174499

100% FR COTTON CONTRACTOR COVERALL

ILCG



- Two-way concealed Nomex® taped brass breakaway zipper concealed snap at top of zipper and neck
- One-piece, topstitched, lay flat collar, hemmed sleeves
- Two set-in pockets, one chest pocket, two patch hip pockets
- Side vent openings
- Protection: Arc rating ATPV 11 calories/cm²

Flame Resistant, 9 oz., 100% Cotton

Sizes: (Reg) 38-58 even sizes only



40174499
NAVY



PROTECTIVE APPAREL



BULWARK iQ SERIES® MEN'S LIGHTWEIGHT COMFORT WOVEN SHIRT



- Banded, topstitched, button-down collar with red trim at neck seam
- Full sideseam gusset for added mobility & tailored sleeve placket
- Topstitched cuffs with two-button adjustable closures
- Large chest pockets

Arc Rating: ATPV 8.5 cal/cm²

Exclusively with TenCate Evolv™, Flame-Resistant, 5.5 oz.

50% Aramid / 25% Lyocell / 25% Modacrylic

Sizes: S-6XL Regular and M-6XL Long



786617FR
DARK GREY



786644FR
NAVY



786671FR
KHAKI



786649FR
LIGHT BLUE



786644FR



785244RF

BULWARK® MEN'S MIDWEIGHT FR ENHANCED VISIBILITY SHIRT



- Placket front with button closure
- Topstitched cuff with button closure
- Banded topstitched collar
- Two chest pockets with flaps & button closure with sewn-in pencil stall
- 360° visibility with front & back 2-inch flame-resistant yellow/silver yellow reflective striping

Arc Rating: ATPV 8.6 cal/cm²

EXCEL FR® ComforTouch® Flame resistant, 7 oz. (235 g/m²)

88% Cotton / 12% Nylon

Sizes: S-3XL Regular and M-3XL Long



785244RF
NAVY

ENHANCED VISIBILITY SAFETY APPAREL



ENHANCED VISIBILITY SHIRT LS CG

- NOT ANSI 107-2015 compliant
 - Two-piece, lined collar with sewn-in stays
 - Button-thru hex-style pockets with angled bartacks
 - Bartacked pencil stall in left chest pocket
 - Double-turned fishtail hem helps prevent unraveling and appears professional when left untucked
 - 2 ½" Yellow/ Silver / Yellow enhanced visibility trim around body below pockets, down both sleeves and across back shoulder to shoulder
 - NOT flame resistant
- 4.5 oz., 65% Polyester / 35% Cotton
Sizes: S - 2XL



784244FR
NAVY / YELLOW VISIBILITY TRIM



INDUSTRIAL ENHANCED VISIBILITY PANT LS CG

- NOT ANSI 107-2015 compliant
 - Two rows of 2 ½" yellow/silver/yellow enhanced visibility trim around both leg thighs
 - Closure: Heavy-duty brass ratcheting zipper, button closure
 - NOT flame resistant
- 65% Polyester / 35% Cotton
Sizes: 28-42 even sizes only, Inseam 28-36



7344-44-8J
NAVY / YELLOW VISIBILITY TRIM
AROUND BOTH THIGHS



ENHANCED VISIBILITY SHIRT LS CG

- NOT ANSI 107-2015 compliant
 - Two button-thru pockets
 - Enhanced visibility trim across pockets, down sleeves and two horizontal stripes across back
 - NOT flame resistant
- 4.5 oz., 65% Polyester / 35% Cotton
Sizes: S - 2XL



7842273R
LIGHT GREY / ORANGE VISIBILITY TRIM

**MAKE
SURE YOUR
EMPLOYEES
ARE
PROTECTED
AND
VISIBLE IN
THE WORK
PLACE.**

HIGH-VISIBILITY SAFETY APPAREL



HIGH-VISIBILITY COLOR BLOCK RIPSTOP WORK SHIRT LS CG

- Certifications Level 1: ANSI 107
- Certifications Level 2: ANSI 107 Type O Class 1
- Button front closure
- Six buttons, gripper closure at neck
- Wrinkle resistant, soil release, moisture wicking
- Convertible collar
- 360° visibility with front and back 2" silver reflective striping
- 40 rating for extra protection from harmful UVA and UVB rays
- Exclusive ripstop fabric is lightweight and breathable but 75% stronger than common workwear fabrics



4.25 oz. Ripstop, 65% Polyester / 35% Cotton
 Sizes: (Reg) M - 3XL



7844448R
 YELLOW /
 NAVY



7844048R
 YELLOW /
 CHARCOAL



78788892
 BACK

78788892
 FRONT

HIGH-VISIBILITY SHIRT LS CG



- ANSI 107-2015 Class 2 Level 2 compliant, 360° visibility
- Two piece lined collar
- Button front closure
- Pencil stall in left chest pocket
- Two button-thru chest pockets
- 2" silver striping over the shoulders, meeting one horizontal stripe around the body above the waist
- NOT flame resistant

5 oz., Ripstop, 65% Polyester / 35% Cotton
 Sizes: (Reg) M - 3XL



78788892
 LIMEYELLOW /
 REFLECTIVE TAPE



HIGH-VISIBILITY SAFETY VEST LS CG



- ANSI 107-2015 Class 2 Level 2 compliant, 360° visibility
- 2" silver striping over the shoulders, meeting one horizontal stripe around the body above the waist
- Hook and loop front closure and adjustable sides
- NOT flame resistant

4.8 oz., 100% Polyester
 Sizes: S/M, L/XL, XXL/3XL



8964463I
 YELLOW / GREEN
 WITH REFLECTIVE TAPE

OUTERWEAR & COVERINGS

PRUDENTIAL OFFERS **OUTERWEAR & COVERINGS**

OUTERWEAR IS REAL TOUGH
AND REAL COMFORTABLE.
YOU CAN ALWAYS COUNT ON
OUTERWEAR AND COVERINGS
TO KEEP YOU PROTECTED.

JACKET LEASE BENEFITS

- No up-front investment.
- Weekly route service visits to pick up any jackets needing repair.
- Replace any worn-out jackets due to repeated wear.
- Prudential will return the following week with repaired and/or replacement jackets.

OUTERWEAR & COVERINGS



SLASH POCKET JACKET **ILCG**

- Two-button side waist adjustment
- Lined convertible collar
- Two lower inset slash pockets
- Utility pocket on left sleeve

7.5 oz., 65% Polyester / 35% Cotton Twill
 Sizes: (Reg) S - 5XL



584844
NAVY



584816
CHARCOAL



584808
BLACK

584808



SOFT SHELL JACKET **ILCG**

- Zip-through cadet collar with chin guard
- Reverse coil zippers
- Front zippered pockets
- Open cuffs and hem

100% Polyester Woven Shell Bonded to a Water-Resistant Film Insert
 100% Polyester Microfleece Lining
 Sizes: (Reg) S - 5XL



586444
NAVY



586427
LIGHT
GREY



58649S
DARK
GREY



586408
BLACK

586408

OUTERWEAR & COVERINGS



58481634

SOLID LINED TEAM JACKET **ILCG**

- Rib knit trim
 - Brass ratcheting zipper closure
 - Two lower inset slash pockets 7.5 oz., 65% Polyester / 35% Cotton Twill
- Sizes: (Reg) S - 4XL



58484434
NAVY



58481634
CHARCOAL



58480834
BLACK



604444

PERMA-LINED PANEL JACKET **ILCG**

- Perma-Lined to 100% nylon taffeta lining
 - Two lower inset slash pockets
 - Utility pocket on left sleeve
- 7.5 oz., length 29", 65% Polyester / 35% Cotton Twill
- Sizes: (Reg) S - 5XL



604444
NAVY



604416
CHARCOAL

For an alternate direct sale jacket offering please visit our online store at SHOPPRUDENTIALUNIFORMS.COM



894816

QUILTED VEST **ILCG**

- Waist-length, vertical quilted shell
 - Elastic side inserts & hand-warmer pockets
- 7.5 oz., 65% Polyester / 35% Cotton Twill
- Sizes: (Reg) S - 3XL



894844
NAVY



894816
CHARCOAL

OUTERWEAR & COVERINGS



404416

TWILL ACTION BACK COVERALL **ILCG**

- Gripper at top of zipper and lapel
- Two set-in front pockets
- Patch hip/chest pockets & rule leg pocket
- Two-way brass zipper
- Hemmed sleeve

Polyester / Cotton Twill

Sizes: (Reg) 34 - 62 even sizes only



404444
NAVY



404451
POSTMAN
BLUE



404416
CHARCOAL



404479
WHITE



401951

100% COTTON COVERALL **ILCG**

- Snap front closure
- Gripper at top of lapel
- Two set-in front pockets
- Patch hip pockets
- Chest pockets & rule leg pocket
- Sized to be worn over clothes

Sizes: (Reg) 36 - 58 even sizes only



401944
NAVY



401951
POSTMAN
BLUE



401979
WHITE



364451

SHOP COAT **ILCG**

- Concealed gripper closure
- Two chest pockets and lower pockets
- Side & back vent openings

Sizes: (Reg) 36 - 58 even sizes only



364444
NAVY



364451
POSTMAN
BLUE

OUTERWEAR & COVERINGS



UNISEX ESD LAB COAT **LS CG**

- Long coat with turn down collar
 - Snap at neck
 - Left chest pocket, two lower pockets
 - Snap cuffs & side kick vents
 - For non-groundable applications
 - 41.5" length (based on medium)
- Texturized Polyester Filament Yarn / Carbon Suffused Nylon Yarn
 Sizes: S - 3XL



325158
ROYAL BLUE



325179
WHITE

UNISEX ESD SHORT LAB COAT **LS CG**

- One piece short coat with notched lapel
 - Four gripper front
 - Left chest pocket, two lower pockets
 - For non-groundable applications
 - 30" length (based on medium)
- Texturized Polyester Filament Yarn / Carbon Suffused Nylon Yarn
 Sizes: S - 3XL



345158
ROYAL BLUE



345179
WHITE

BUTTON FRONT TOPPERS **ILCG**

- Short sleeve
 - Two lower french hemmed pockets
- Sizes: S - 4XL



05354448
NAVY



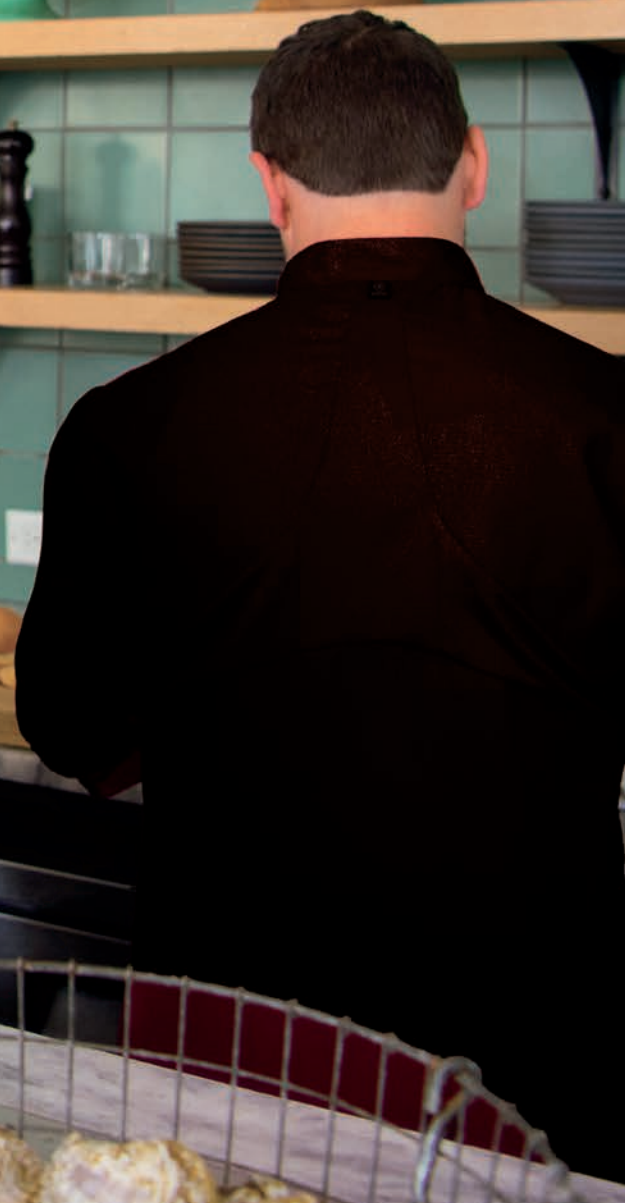
05354948
LIGHT BLUE

CULINARY APPAREL

PRUDENTIAL OFFERS

REVOLUTIONARY CULINARY APPAREL

- **Increased Performance**
- **Freedom of Movement**
- **Elevated Image**



CHEF COATS WITH MIMIX™ & OILBLOK



OIL BLOK

Powered by



Get messy, bend, stretch, squat and reach without your clothes holding you back.

Features You'll Love



Oil Blocker

Tackles the toughest oils and liquids



Flex Panel

Adds stretch and vents where you need 'em



Wicking Fabric

Cools & dries by absorbing moisture



Color Keeper

Keeps colors bright wash after wash



Stain Guard

Releases dirt and grime easily in wash



Wrinkle Free

Requires little to no ironing



MEN'S CHEF COAT WITH OILBLOK + MIMIX™ IL CG

Our Ten Button Chef Coat with MIMIX® and OilBlok will be the last chef coat you will ever need to own. Its flex stretch panels provide maximum range of motion and enhanced mobility to keep you moving all day. This coat also comes with performance mesh for improved breathability in the areas where you need it most. Lastly, this coat's OilBlok finish keeps stains from forming so you always look professional.

- Performance mesh provides additional breathability
- Ten non-yellowing UV buttons
- Left chest pocket, Thermometer pocket on left sleeve
- Double breasted and clean-finish vented cuffs
- Industrial-friendly ripstop fabric with Touchtex™ technology providing breathable comfort, lasting color and stain resistance
- MIMIX™ US PAT. NO. 10,085,490

Fabric - Body: Ripstop
Blend - Body: Polyester/Cotton
Flex Panels: Polyester

sizes: S - 4XL
Long Sleeve / Short Sleeve Available

2844794S



2844084S



2844794S
WHITE



2844084S
BLACK



CULINARY APPAREL



2878085K



843549

10 PEARL BUTTON CHEF COAT **ILCG**

- Stand up collar
- Double breasted with 10 pearl buttons
- Non-yellowing UV buttons for long lasting whiteness through industrial laundry processing
- Left chest pocket
- Clean finish vented cuffs
- Pre-shrunk with soil release finish
- 30" back length on size medium
- Thermometer pocket

Plain Weave Fortrel Fiber

Sizes: XS - 6XL



2878795K
WHITE



2881085K
BLACK

UNISEX WRAP-AROUND SMOCK **ILCG**

- Two lower pockets
- One chest pocket

Sizes: S - 3XL



843549
LIGHT BLUE



843544
NAVY



843527
GRAPHITE
GREY



843558
ROYAL BLUE



843579
WHITE



843571
TAN



843579RK

UNISEX COLLARLESS BUTCHER WRAP **ILCG**

- Ties attached with side access slits
 - 37" length (based on medium size)
 - One interior left chest pocket
 - Two exterior lower pockets
 - Collarless
 - 3/4 Sleeves
- Sizes: XS - 5XL



843579RK
WHITE



49817930

UNISEX BUTCHER WRAP **ILCG**

- Ties attached
- Side access slits
- 44.5" length (based on medium size)
- Exterior pockets
- Turned down collar

Spun Polyester
Sizes: XS - 5XL



49817930
WHITE

498179 Interior Pockets Only (Not Pictured)
WHITE

CULINARY APPAREL



488179

UNISEX GRIPPER FRONT BUTCHER COAT **ILCG**

- Traditional fit with gripper closure
- Side vent openings; no back vent
- One top exterior pocket and two lower exterior pockets
- Soft hand
- 44.75" length (based on medium size)

Spun Polyester
Sizes: XS - 5XL



488179
WHITE



486479

UNISEX COOLER COAT **ILCG**

- Snap Closure
- Interior chest pocket
- Two exterior lower pockets
- 45" length (based on medium size)

Spun Polyester
Sizes: XS - 5XL



486479
WHITE

Clean, Simple & Professional.



297808



734408



698189

UNISEX COOK SHIRT **ILCG**

- No pockets
- Available in short sleeve only
- Square bottom & gripper closure

Spun Polyester
 Sizes: XS - 5XL



297879
 WHITE



297808
 BLACK

COOK/CHEF PANT **ILCG**

- Front & Back Pockets
- Touchtex™ Twill
- Zipper fly with button closure

Polyester / Cotton Twill
 Sizes: Men's 28-54 even sizes only
 Women's 4-28 even sizes only



734479 MEN
 614479 WOMEN
 WHITE



734408 MEN
 BLACK

UNISEX B&W CHECK CHEF PANT **ILCG**

- Side elastic waist
- Zipper fly with snap closure
- Two front pockets & two spade hip pockets

Polyester Yarn Dyed
 Sizes: 28-46 even sizes only



698189
 BLACK / WHITE
 CHECK

CULINARY APPAREL



0764791B



1378793A



1064793A

BIB APRON **ILCG**

- Basic bib grocer style
 - One size fits all
- Spun Polyester Fortrel Fiber
 Sizes: One Size Fits All



0764081B
BLACK



0764411B
BURGUNDY



0764221B
FOREST GREEN



0764301B
KELLY GREEN



0764441B
NAVY



0764561B
RED



0764581B
ROYAL BLUE



0764791B
WHITE

BISTRO APRON **ILCG**

- Basic two pocket styling
 - Strong, tubular braid ties
- Polyester
 Sizes: One Size Fits All



1378793A
WHITE



1378083A
BLACK

FOUR-WAY APRON **ILCG**

- Basic no pocket styling
 - Strong, tubular braid ties
- White - Polyester
 Black - Polyester / Cotton
 Sizes: One Size Fits All



1064793A
WHITE



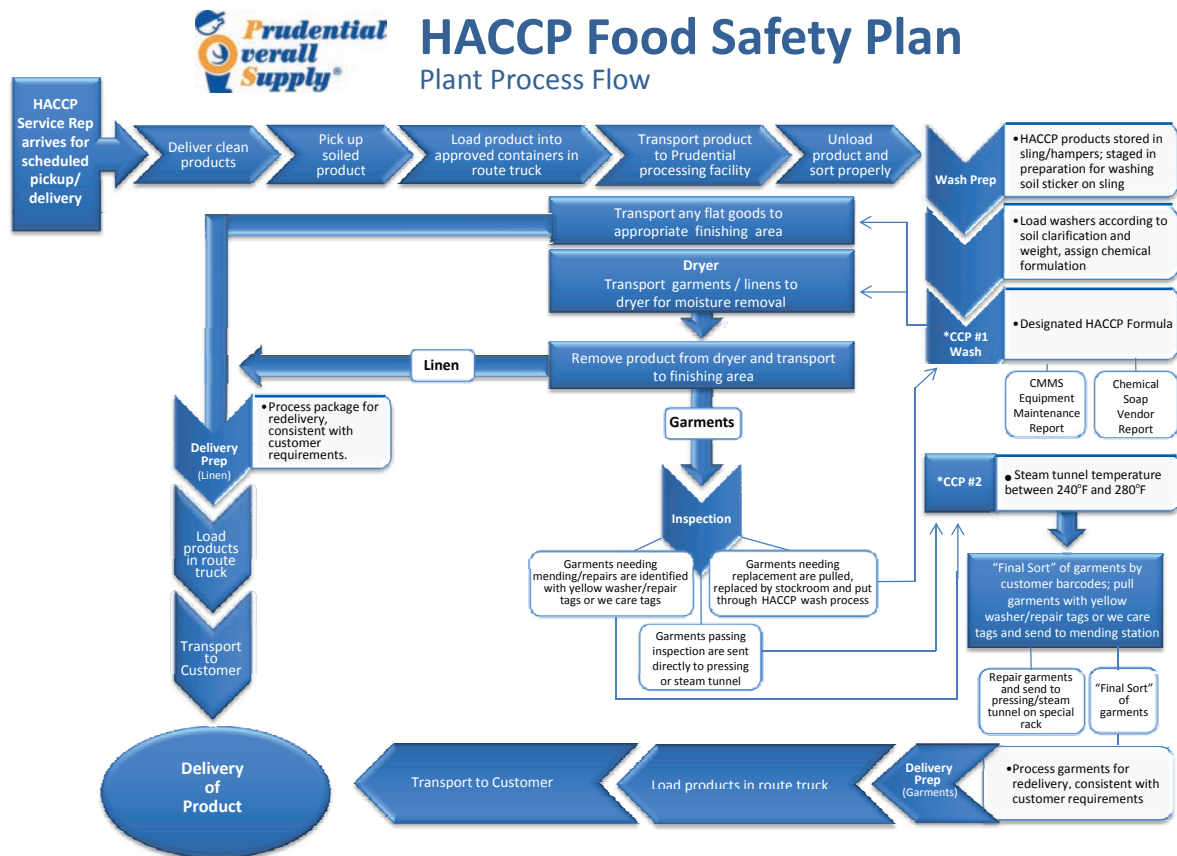
1044083A
BLACK

HACCP

Overview of Available Services

Our HACCP work wear and laundering solutions help ensure safety and minimize cross contamination risks. Support Good Manufacturing Practices (GMPs) and your clean process goals with our reusable textile program.

- Specialized food safety garments
- Hygienic laundering*
- Portal-to-portal sanitation control
- Documented, verifiable processing
- HACCP trained service staff
- Polywrap deliveries available
- Custom programs and services



*CCP - Critical Control Point
Revised 02/16/23

* The wash formulas utilized for processing food (HACCP) garments meet the laundry disinfection requirements for the EPA registration guidelines for AdvaCare Disinfectant with a usage rate of 4 oz per hundred rate of laundry at 140°F for 5 minutes of contact time in the laundry.

HACCP APPAREL



HACCP COAT **ILCG**

- Lab coat style
- One piece collar with notched lapel
- Gripper closures with covered front panel
- Matching ribbed knit cuffs
- No pockets

Spun Polyester

Sizes: XS-6XL

Features
HIDDEN GRIPPERS



327879CO
WHITE



327844CO
NAVY



327849CO
LIGHT BLUE



327871CO
TAN



327827CO
LIGHT GREY



HACCP SMOCK **ILCG**

- Wrap style
- No collar
- No pockets
- Long sleeve

Spun Polyester

Sizes: XS-6XL



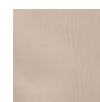
847879PA
WHITE



847844PA
NAVY



847849PA
LIGHT BLUE



847871PA
TAN



BUTCHER COAT WITH KNIT CUFFS **ILCG**

- Six gripper closure
- Interior left chest & two exterior lower pockets
- Lined notched lapel collar
- 41.5" length (based on medium)

Sizes: XS - 4XL



323579PK
WHITE



FOOD PROCESSING SHIRT **ILCG**

- Closure: Seven gripper front
 - Collar: Two-piece, lined, sewn-in stays
 - Facing: Stitched-down front
 - Finish: Pre-cure durable press with soil release and wickable finish
- Polyester / Cotton

Sizes:

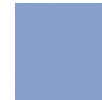
SHORT SLEEVE SS		LONG SLEEVE RG	
WHITE	S-6XL	WHITE	S-6XL
NAVY	S-4XL	NAVY	S-3XL
LIGHT BLUE	S-6XL	LIGHT BLUE	S-6XL
TAN	S-4XL	TAN	S-3XL



783579SN
WHITE



783544SN
NAVY



783549SN
LIGHT BLUE



783571SN
TAN



FOOD PROCESSING PANT **ILCG**

- Front & Back Pockets
 - Touchtex™ Twill
 - Jean-style waistband with button closure
- Polyester / Cotton Twill

Sizes: Men's 28-54 even sizes only



734479
WHITE



734444
NAVY



734471
TAN

PRUDENTIAL OFFERS

Medical Apparel

PROJECT A PROFESSIONAL IMAGE AND PUT YOUR
BEST FOOT FORWARD IN MEDICAL APPAREL



514933



51494936
POCKETLESS

UNISEX SCRUB TOP ILCG

- Reversible
- Left breast pocket inside and out (pocketless available)
- V-neck collar
- Color match neck bias to identify size
- Set-in sleeves

Cotton / Polyester

Sizes: XS-5XL



514949
CEIL BLUE
WITH POCKET



514933
JADE GREEN
WITH POCKET



51494936
CEIL BLUE
POCKETLESS



519633PA
JADE GREEN
POCKETLESS



524933



52964CRV
POCKETLESS

UNISEX SCRUB PANT ILCG

- Reversible
- Back hip pocket (pocketless available)
- Color coded draw strings to identify size
- Sewn in gussets on size large and up

Cotton / Polyester

Sizes: XS-5XL



524949
CEIL BLUE
WITH POCKET



524933
JADE GREEN
WITH POCKET



52964CRV
CEIL BLUE
POCKETLESS



529633PA
JADE GREEN
POCKETLESS



514244RV

524244RV

UNISEX SCRUB TOP ILCG

- Reversible
- Left breast pocket inside and out
- V-neck collar
- Color match neck bias to identify size
- Set-in sleeves
- Peached for softness and has mechanical stretch

Polyester / Cotton Twill

Sizes: XS-5XL



514244RV
NAVY

UNISEX SCRUB PANT ILCG

- Reversible
- Back hip pocket
- Color coded draw strings to identify size
- Sewn in gussets on size large and up
- Peached for softness and has mechanical stretch

Polyester / Cotton Twill

Sizes: XS-5XL



524244RV
NAVY



044944CE

Comfort Meets Style. Stay Healthy.

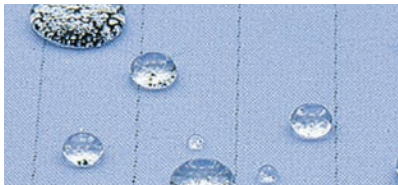
UNISEX WARM-UP JACKET **ILCG**

- Collarless
- Snap front closure
- Color matched knit collar and cuffs
- Peached for softness and has mechanical stretch

Polyester/Cotton Twill
Sizes: XS-5XL



044944CE
NAVY



Styles below assist employees to comply with OSHA 29CFR 1910

Popular Applications:

- Clinical Laboratory, Pathology, Transfusion Medicine, Phlebotomy, Hematology, Dialysis
- General Dentistry, Periodontist, Oral & Maxillofacial Surgeons
- All Quasi Clean Room Applications requiring ISO 5 (Class 100) and Static Dissipative Fabric (10⁹)



34584933

UNISEX MID-LENGTH (34") JACKET **ILCG**

- Full 360° front and back protection
- Light back fabric promotes wearer comfort
- Three pockets - double stitch and bar tack reinforced
- Heavy duty stainless snap closures
- Cuffs for over gloving, quick dry design, comfortable
- Side vent for access to pockets, improved air flow

Polyester / Carbon
Fluid resistant, ESD, low lint fabric
Sizes: XS - 3XL



34584933
CEIL BLUE



34587933
WHITE



32587933

UNISEX LONG (41") COAT **ILCG**

- Full 360° front and back protection
- Light back fabric promotes wearer comfort
- Three pockets - double stitch and bar tack reinforced
- Heavy duty stainless snap closures
- Cuffs for over gloving, quick dry design, comfortable
- Side vent for access to pockets, improved air flow

Polyester / Carbon
Fluid resistant, ESD, low lint fabric
Sizes: XS - 5XL



LD0158KF
ROYAL BLUE



32587933
WHITE



323579

UNISEX LAB COAT **ILCG**

- Performance blend poplin
 - Exterior left chest & two lower exterior pockets
 - Lined notched lapel collar
 - Side vent openings
 - Five button opening
 - 41.5" length
- Sizes see below



323549
LIGHT BLUE
SIZES: 36-54



323544
NAVY
SIZES: 36-56



323579
WHITE
SIZES: 32-60



32357997

UNISEX LAB COAT **ILCG**

- Performance blend poplin
 - Five gripper closure
 - One-piece, lined, notched lapel
 - Pre-cure durable press
 - Two lower exterior pockets
 - Bartacked pencil stall
- Sizes: XS - 4XL



32354997
LIGHT BLUE



32357997
WHITE



323579KF

LAB COAT WITH KNIT CUFFS **ILCG**

- Six gripper closure
 - Exterior left chest & two exterior lower pockets
 - Lined notched lapel collar
 - 41.5" length (based on medium)
- Sizes: XS - 5XL

323579KF
WHITE



323579PK

LAB COAT WITH KNIT CUFFS **ILCG**

- Six gripper closure
 - Interior left chest & two exterior lower pockets
 - Lined notched lapel collar
 - 41.5" length (based on medium)
- Sizes: XS - 4XL

323579PK
WHITE



383579

WOMEN'S LAB COAT **ILCG**

- Performance blend poplin
 - Exterior left chest & two lower exterior pockets
 - Lined notched lapel collar
 - Side vent openings
 - Women's six button opening
 - 38.25" length (based on medium)
- Sizes: XS - 4XL

383579
WHITE

PRUDENTIAL OFFERS

Facility Services

WE HAVE THE PRODUCTS AND SERVICES YOU NEED!

QUICK CLAMP HANDLE ACTION



WET MOPS & HANDLES

Saves time, absorbs more, cleans better and costs less than store bought mops.

24oz. large wet mop with looped ends to resist snags and fraying.

Dual tailbands create larger, more efficient mopping action.

Professional handle & tool offer quick change without touching soiled mops.

NON-FOOD SERVICE HEAVY SOIL WET MOP **CG**

- 24oz.
- 100% Synthetic
- 9" Polyester blue headband with POS logo

9378

BLUE

FOOD SERVICE LIGHT SOIL WET MOP **CG**

- 24oz.
- 100% Synthetic
- 9" Polyester green headband with POS logo

9385

GREEN

WET MOP HANDLE

9392

NATURAL

ERGONOMIC PREMIUM MOP BUCKET

- Ergonomic design reduces related injuries
- Provides superior cleaning
- Faster drying floors increase safety

9310

PRUDENTIAL DUST MOPS ARE DELIVERED ON THE FRAME!



PERFORMANCE DUST MOPS **CG**

- Traps and holds onto dust, dirt and debris
- Makes maintaining your floors quick and easy

9312 BLUE 14"

9313 BLUE 22"

9314 BLUE 30"

9315 BLUE 42"

DUST MOP HANDLE

- Swivel hardware for easy maneuvering
- Quick Clamp Handles
- Framed

9391

NATURAL

MICROFIBER SYSTEMS

SUPER ABSORBENT

Microfiber absorbs 7-10 times its weight in water or other fluids. The Microfibers are 100 times finer than a human hair & 1000X smaller than cotton.

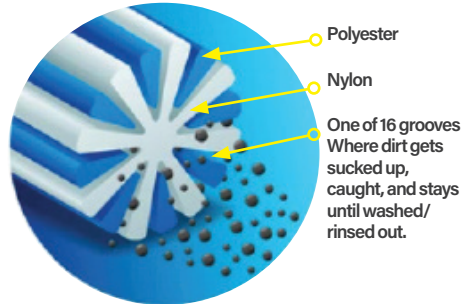
WRINGS OUT EASILY

The super soft Microfiber cloths are easy to handle, and wring out easier than synthetic & natural chamois, and conventional cotton products.

ATTRACTS DIRT

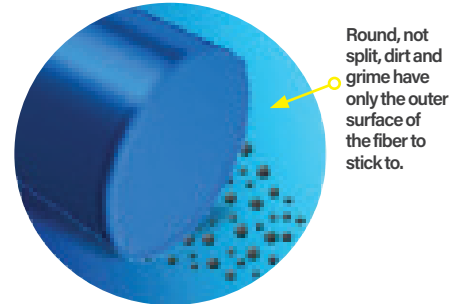
The fibers are so small, and have angled edges along the fibers that pull in Grease & Grime and attract dirt, leaving the surface truly clean. They are so soft that they do not scratch delicate surfaces.

ANATOMY OF A MICROFIBER



VS.

ANATOMY OF OTHER FIBERS

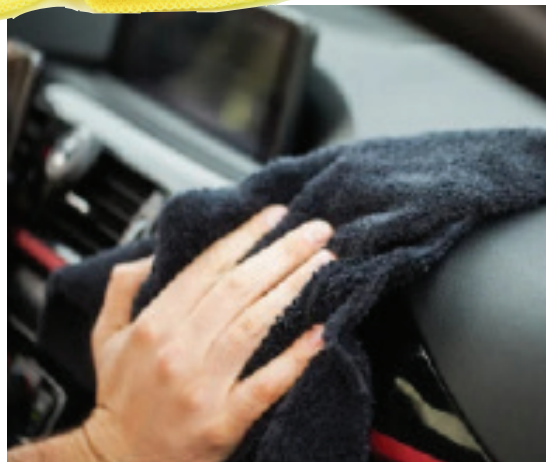


CLEAN GREEN
TRSA CERTIFIED



MICROFIBER TOWELS CG

9790	BLUE	16" X 16" (HEALTHCARE)
9790Y	YELLOW	16" X 16" (GENERAL USE / CLEANING)
9867	GREEN	16" X 16" (FOOD CONTACT SURFACES)
9790B	BLACK	16" X 16" (AUTOMOTIVE)



MICROFIBER MOP SYSTEM



MICROFIBER WET PAD CG

- USES: Wet Mop
- Fabric Weight: 450g/m²
- Piped atop over lock stitching
- Rectangular with rounded corners

9387 BLUE 18"
9347 BLUE 24"
9360 BLUE 36"

MICROFIBER DUST PAD CG

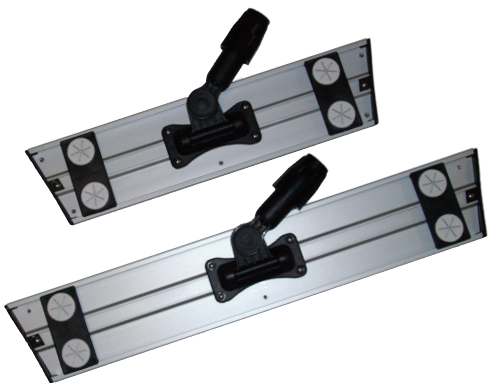
- USES: Dry Mop
- Fabric Weight: 450g/m²
- Piped atop over lock stitching
- Rectangular with rounded corners

9348 GREEN 18"
9349 GREEN 24"
9361 GREEN 36"

MICROFIBER SCRUBBER PAD CG

- USES: Wet Mop for use on tile and grout
- Fabric Weight: 450g/m²

9350 GOLD/DARK BLUE 18"
9351 GOLD/DARK BLUE 24"
9362 GOLD/DARK BLUE 36"



ALUMINUM FRAME CG

- Brushed aluminum with black accents
- Universal connector fits most standard metal or wood handles
- 190° degree 2X flexibility
- Velcro attached to aluminum
- Pole adapter attached with rivets

9380 18"
9325 24"
9330 36"



TUBULAR MICROFIBER WET MOP CG

- Durable
- Super absorbent allowing floors to dry quickly

9358 BLUE



MICROFIBER MOP CHARGING BUCKET

- Fits 18" pads
- Air tight / water tight lid
- Wheels attached

9310A



ALUMINUM EXTENSION HANDLE

- Brushed aluminum with black accents

9381



CLEAN GREEN
TRSA CERTIFIED

CLEANING CHEMICALS

JUST ADD WATER SYSTEM

JAWS CARTRIDGE CONCENTRATES

JAWS unique cartridge system requires no equipment. Just add water to a JAWS work bottle, insert the 10ml cartridge and attach the sprayer. The concentrate releases into the water making 32oz of cleaner.



NSF & Safer Choice

JAWS MULTI-PURPOSE CLEANER

- Multi-purpose cleaner breaks down and quickly removes grease, oil and heavy soils
- For use on a wide range of surfaces including tabletops, floors, grout, vinyl, sealed wood and stainless steel
- Streak-free
- Non-butyl formulation

301MP4

Size: 10fl. oz. Cartridge
Dilution: 1:96
pH Level: 8.0-10.0
Color: Orange
Fragrance: Citrus
Quantity: 4 Cartridges Pack
For use with: 301MFCTSB Spray Trigger Bottle



Safer Choice

JAWS TILE, GROUT, BATHROOM CLEANER & DEODORIZER

- High foaming, citric acid blend
- Quickly dissolves lime, soap films, grease, and mineral deposits
- Cleans and de-greases a variety of surfaces including tile, toilet bowls, urinals and sinks

301RC4

Size: 10fl. oz. Cartridge
Dilution: 1:96
pH Level: 2.5-3.5
Color: Violet
Fragrance: Citrus
Quantity: 4 Cartridges Pack
For use with: 301RCTGTSB Spray Trigger Bottle



NSF & Safer Choice

JAWS GLASS & HARD SURFACE CLEANER

- Versatile daily cleaner for use on a wide range of surfaces
- Utilizes soil-suspending agents
- Formulated without ammonia or alcohol
- Streak-free and anti-static
- Safe on computer and TV screens

301GL4

Size: 10fl. oz. Cartridge
Dilution: 1:96
pH Level: 7.0-8.0
Color: Dark Turquoise
Fragrance: None
Quantity: 4 Cartridges Pack
For use with: 301GHSTSB Spray Trigger Bottle



NSF & Safer Choice

JAWS DUO COMPLETE SANITIZER / DISINFECTANT

- 60 second sanitizer of food contact surfaces, processing equipment and other surfaces in food processing locations without potable water rinse
- Surface must remain wet for 60 seconds Do not rinse and let air dry
- 4-minute disinfectant
- Surface must remain visibly wet for 4-minutes. Wipe dry with a cloth
- Kills bacteria and viruses

301SD4

Size: 7.5fl. oz. Cartridge
Dilution: 1:96
pH Level: 6.0-8.5
Color: Dye Free
Fragrance: Mild
Quantity: 4 Cartridges Pack
For use with: 301DUOTSP Spray Trigger Bottle

CLEANING CHEMICALS



JAWS STARTER PACK

All JAWS collection in one pack.

Set includes:

- (1) JAWS Multi-Purpose Cleaner Cartridge
- (1) JAWS Tile, Grout, Bathroom Cleaner & Deodorizer Cartridge
- (1) JAWS Glass & Hard Surface Cleaner Cartridge
- (1) JAWS Duo Complete Sanitizer / Disinfectant Cartridge
- (4) 32 oz. Spray Bottles
- SDS Sheets For All Four Products

301JSP Sold by Pack



SMART FLOORS DAILY ENZYME CLEANER PACKETS

- Non Toxic
- Odor Free Floors
- Increases Traction
- Cleans & Brightens Grout
- No Phosphate
- Non-BUTYL
- Neutral PH
- Biodegradable
- Each Pack Covers 2000 sq. ft.

301LFC

2.5 fl. oz., Each Packet = 1 Mop Solution
Sold by the Box, 30 Packets Per Box

SMART FLOORS NEUTRAL ALL-PURPOSE CLEANER PACKETS

- Non Toxic
- Rinse Free
- Highly Concentrated Neutral Floor Cleaner
- Use on Sealed Wood, Linoleum, Marble, Vinyl Flooring
- Leaves No Film or Streaks
- Ideal for High Traffic Floor Areas
- High Gloss Floor Finishes
- Each Pack Covers 2000 sq. ft.

301NAP

2.5 fl. oz., Each Packet = 1 Mop Solution
Sold by the Box, 30 Packets Per Box

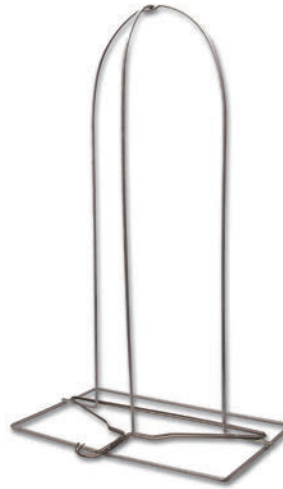
STORAGE SYSTEMS



SHOP TOWEL CAN

- Helps improve safety
- 14 Gallons

9743



HANGER RACK

- Stores all reusable hangers
- Keeps change rooms organized
- Recycle hangers to help the environment

9740
METAL



MAX SOILED LAUNDRY LOCK UP UNIT

- Holds approx. 150 lbs. of garments
- Provides convenient housekeeping
- Prevents theft by locking unit
- 23.9375" x 21.4375" x 80.8125"

2703SV
SILVER VEIN



BIG8 EIGHT BANK LOCKER

- Most popular garment system
- Space saving design
- Accommodates hanger-held garments
- Compartment width 6"
- Turn knob style
- 30.594" x 21.4375" x 80.8125"

2700SV
SILVER VEIN



TOWEL MANAGER LOCKER

- 450 towel capacity
- Features two wheels and handle for mobility
- Built-in adjustable bag stand
- 24" x 21" x 69"

2700TM
SILVER VEIN



GARMENT ROLLING RACK

- Neatly holds shirts and pants

2702
METAL



LAUNDRY BAG & SCISSOR RACK STAND CG

- Neat and efficient
- Stores soiled garments for pick up
- Woven Polyethylene
- 8 loop draw cord closure

Bag
9714
BLUE / WHITE
28" x 18" x 36"

Stand
9741
METAL



HIGH CART

- 48" L x 28 1/2" W x 68 1/2" H
- Inside Depth: 59"
- Load Capacity 800 lbs.

9702HB
BLUE



LOW CART

- 43 1/2" L x 28 1/2" W x 38 1/2" H
- Load Capacity 500 lbs.

9702LB
BLUE

TOTAL TOWEL DELIVERY

- Total Towel Delivery (TTD) ensures that complete customer inventory is met with each delivery.
- We offer a variety of types and sizes of towels. From the old stand by “shop towels” to a lint free towel for glass wiping.
- All of our toweling is manufactured for maximum absorbency, sized to fit the job, clean and safe, economical and environmentally friendly.



BAR TOWEL CG

Blend ribbed terry scrubber towel, low snag
COUNTER TOP/FOOD PREP
16" x 19"
9930
WHITE



FENDER OR SEAT COVER CG

Acrylic Blend, knitted fleece
36" X 60"
9723
BLUE



BATH TOWEL CG

100% Premium Cotton Terry

PREMIUM BATH TOWEL
24" X 48"
9923M
WHITE



GLASS TOWEL CG

100% Premium Cotton, square weave,
low/tight pile
16" X 28"
9962
RED STRIPE



#1 TOWEL
22" X 44"
9985
WHITE



GRILL PAD CG

100% Premium Cotton, terry, triple thick
10" X 14"
9739
BLUE



#2 TOWEL
22" X 44"
9986
BLUE



FACE TOWEL CG
100% Premium Cotton Terry,
hemmed edges
12" X 12"
9972
WHITE



HUCK TOWEL CG

100% Premium Cotton, huck/
texturized weave

#1 TOWEL
16" X 32"
9960
WHITE



DISH TOWEL CG
100% Premium Cotton, square weave,
green center stripe
26" X 36"
9958
WHITE



#2 TOWEL
16" X 32"
9961
BLUE



MACHINIST'S TOWEL CG

100% Cotton, heavyweight weave
18" X 18"

9784
YELLOW



PRINTER'S TOWEL CG

100% Cotton, heavyweight weave
18" X 18"

9770
BLUE



SHOP TOWEL CG

100% Cotton, heavyweight weave

18"X 18" AUTO/GREASE
9792
PURPLE



18"X 18" LIGHT SOIL
9779
WHITE



TURKISH TOWEL CG

100% Premium Cotton, ribbed terry
scrubber towel, low snag

NON-FOOD, LIGHT CLEANING
16" X 19"
9996
YELLOW



AUTOMOTIVE GREASE/OIL
16" X 19"
9994
PURPLE



FOOD SERVICE
16" X 19"
9995
BLUE



SALON TOWEL CG

100% Premium Cotton Terry,
hemmed edges, vat dyed, bleach safe
16" X 27"
9713
BLACK

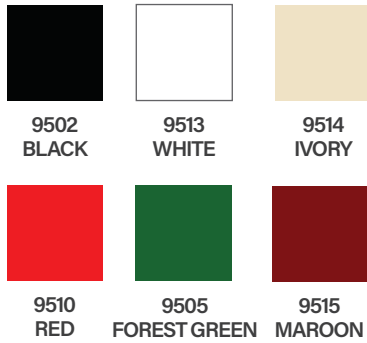


100% Premium Cotton Terry, hemmed edges
16" X 27"
9978
WHITE

NAPKINS



LINEN NAPKINS **CG**
100% Spun Polyester 20" x 20", Hemmed



BISTRO NAPKINS **CG**
100% Spun Polyester, 18" x 22", Hemmed



TND
TOTAL
NAPKIN
DELIVERY

TND ensures that complete customer inventory is met with each delivery.



PRUDENTIAL FACT:

Cloth napkins are sealed to ensure fresh clean napkins direct to your door.

BRANDED DISPENSER PROGRAM



Offered by



Coordinate your restroom with matching colors, and promote your brand as well.

- Supreme-Quality, Not Stickers
- Chemical & Scratch Resistant
- Shields offered in Black, Silver & White



9551HRB



9551HRS



9551HRW

BRANDED HARD ROLL TOWEL DISPENSER

9551HRB BLACK

9551HRS SILVER

9551HRW WHITE



9551CPS

CENTER PULL TOWEL DISPENSER

9551CPB BLACK

9551CPS SILVER

9551CPW WHITE



9551JRW

DUAL JUMBO ROLL TISSUE DISPENSER

9551JRB BLACK

9551JRS SILVER

9551JRW WHITE



9551SCB

DUAL SMALL CORE TISSUE DISPENSER

9551SCB BLACK

9551SCS SILVER

9551SCW WHITE

ASK YOUR REPRESENTATIVE for more information.

RESTROOM PAPER PRODUCTS

COMPLETE RESTROOM SOLUTIONS PROFESSIONALLY SERVICED BY YOUR PRUDENTIAL REPRESENTATIVE!

Why spend time and money purchasing, transporting, and storing paper and restroom products when a Prudential Service Representative can provide you with convenient and just-in-time deliveries?

Prudential Overall Supply products offer superior quality at reasonable prices. In addition, our state-of-the-art dispensers provide your customers and employees with a restroom solution that is excellent for office, industrial, retail, healthcare, or manufacturing environments. Our dispensing systems are professionally designed giving them a high-end appearance.



AUTOMATIC HARD ROLL TOWEL DISPENSER

- Adjustable paper length (8", 12", 16")
- Adjustable paper delay (0, 1½, 3 seconds)
- Paper self feed feature
- Hand distance sensor
- Uses 4 D-cell alkaline batteries
- Overall size: 16" x 12.44" x 9.06"
- Branded Shield Available

9550HRA

For use with:
9443
 Hard Roll Towels - Bleached
 (6 rolls per case, 800 ft/roll)



HARD ROLL TOWEL AUTO CUT DISPENSER

- No Touch Mechanical Hands-Free Dispenser
- Durable
- Impact resistant
- Perfect portion control
- Economical
- Overall size: 16" x 12.44" x 9.06"
- Branded Shield Available

9550HRM

For use with:
9443
 Hard Roll Towels - Bleached
 (6 rolls per case, 800 ft/roll)



CENTER PULL TOWEL DISPENSER

- Durable & impact resistant
- Great in restrooms, food prep areas, gasoline islands, etc
- Overall size: 13.25" x 10.75" x 10.25"

9550CPT

For use with:
9905
 Center Pull Towels - White
 (6 rolls per case, 605 ft/roll) Septic friendly

9917
 Center Pull Paper Shop Towels - Blue
 (6 rolls per case, 300 ft/roll)

9484
 Gym Wipes - Wet Disinfecting Wipes
 (2 rolls per case, 800/roll)

RESTROOM PAPER PRODUCTS



SINGLE JUMBO ROLL TISSUE DISPENSER

- Hands free dispensing
- Easy loading
- Durable & impact resistant
- More hygienic
- Saves money, labor & time
- Eliminates pilferage

9916

For use with:
9901
 Jumbo Roll Tissue
 Two-ply
 (12 rolls per case, 1000 ft/roll)



DUAL JUMBO ROLL TISSUE DISPENSER

- Hands free dispensing
- Easy loading
- Durable & impact resistant
- Eliminates pilferage
- Reduces labor
- Eliminates stub roll waste
- Overall size: 20.25" x 12.75" x 5.93"
- Branded Shield Available

9550DJR

For use with:
9901
 Jumbo Roll Tissue
 Two-ply
 (12 rolls per case, 1000 ft/roll)



DUAL SMALL CORE TISSUE DISPENSER

- Hands free dispensing
- Easy loading
- Durable & impact resistant
- Eliminates pilferage
- Reduces labor
- Overall size: 12.75" x 8" x 5.75"
- Branded Shield Available

9550DSC

For use with:
2221
 Small Core Tissue
 Two-ply
 (36 rolls per case, 1000 sht/roll)



MULTI FOLD TOWEL WALL MOUNT DISPENSER

- Easy loading
- Durable & impact resistant
- More hygienic
- Saves money, labor & time
- Overall size: 14" x 11" x 6"

9550MFT BLACK

For use with:
9907
 Multi Folded Paper Towels - Bleached
 (4000 sheets/case)



COUNTER TOP DISPENSER

- Easy loading
- Durable & impact resistant
- More hygienic
- Saves money, labor & time
- Overall size: 8.15" x 12" x 5.5"

9906B BLACK
 9906S SILVER

For use with:
9907
 Multi Folded Paper Towels - Bleached
 (4000 sheets/case)



RESTROOM PAPER PRODUCTS



COMPLIMENTARY DISPENSER OFFERING

Prudential Overall Supply offers COMPLIMENTARY Center Pull Dispensers when you sign up for just-in-time Prudential Restroom Service.*

Realize long-term savings by using our new line of products — the highest quality at competitive prices!



CENTER PULL STANDARD PAPER TOWELS

9905

- White
- Two-Ply
- Septic Friendly
- 6 rolls per case
- 605 ft. per roll



CENTER PULL BLUE PAPER SHOP TOWELS

9917

- Blue
- Three-ply
- 6 rolls per case
- 300 ft. per roll



HARD ROLL PAPER TOWELS

9443

- Bleached
- 6 rolls per case
- 800 ft. per roll



JUMBO ROLL TOILET TISSUE

9901

- Two-ply
- 12 rolls per case
- 1000ft per roll



MULTI-FOLDED TOWELS

9907

- Bleached
- 4000 sheets per case



SMALL CORE TISSUE

2221

- Two-ply
- 36 rolls per case
- 1000 sheets a roll



GYM WIPES

9484

- Wet disinfecting wipes
- 2 rolls per case
- 800 sheets a roll

For use with:

9906 Center Pull Towel Dispenser



BATHROOM TISSUE ROLL

9913

- Two-ply
- 96 rolls per case
- 500 sheets a roll
- Individually wrapped



TOILET SEAT COVER DISPENSER

9927

- Seat covers provide an effective barrier
- Covers are 100% biodegradable

For use with:

9914 Toilet Seat Cover

- Bleached
- 5000 sheets per case



FACIAL TISSUE

9944

- 8.8" x 11"
- 30 boxes per case
- 100 per box



KITCHEN ROLL TOWEL

9918

- 8.8" x 11"
- 30 rolls per case
- 85 sheets per roll

HAND CARE PRODUCTS



**CHOICE 750 PROGRAM
ALCO-GEL INSTANT HAND SANITIZER 70
9937AC1C**

750ML CARTRIDGE - 6 CARTRIDGE/CASE

- A quick evaporating sanitizer
- Leaves hands smooth and refreshed
- It kills 99.99% of common germs that cause illness
- Light citrus scent
- Dye Free
- Active ingredient: 70% ethyl alcohol

For use with:

**9937MDW - 750ML MANUAL DISPENSER
WHITE**

**9937ADW - 750ML AUTO DISPENSER
WHITE WITH BATTERIES**



**CHOICE 750 PROGRAM
ALCO-FOAM INSTANT HAND SANITIZER
9937AC2C**

750ML CARTRIDGE - 6 CARTRIDGE/CASE

- Foam hand sanitizer that is formulated to kill 99.99% of the most common germs that may cause illness
- Fragrance & Dye Free
- Suitable for use in federally inspected food processing facilities
- Active ingredient: 62% ethyl alcohol

For use with:

**9937MDW - 750ML MANUAL DISPENSER
WHITE**

**9937ADW - 750ML AUTO DISPENSER
WHITE WITH BATTERIES**



**CHOICE 750 PROGRAM
ANTIBACTERIAL DYE-FREE FOAM HAND WASH
9937AC3C**

750ML CARTRIDGE - 6 CARTRIDGE/CASE

- General purpose foaming hand wash
- Enriched with humectants, emulsifiers and moisturizers to gently wash away impurities without drying your skin
- Fragrance & Dye Free

For use with:

**9937MDW - 750ML MANUAL DISPENSER
WHITE**

**9937ADW - 750ML AUTO DISPENSER
WHITE WITH BATTERIES**

DISPENSERS / STAND (for use with the above Antibacterial, Hand Sanitizer Products)



**750ML MANUAL DISPENSER
9937MDW WHITE
9937MDB BLACK**

Ergonomic and easy to use.

BENEFITS

- ADA Compliant
- Compact foot print
- Fits anywhere, saves wall space
- Clear view front to see product level quickly
- Optional keyless entry

ACCESSORIES

- Catch tray

PRUDENTIALUNIFORMS.COM



**750ML AUTO DISPENSER WITH BATTERIES
9937ADW WHITE
9937ADB BLACK**



**TABLETOP AUTO DISPENSER STAND
9430ADS
BLACK**

- Powder Coated

For use with:

**750ML MANUAL DISPENSER
9937MDW WHITE
9937MDB BLACK**

**750ML AUTO DISPENSER WITH BATTERIES
9937ADW WHITE
9937ADB BLACK**

HAND CARE PRODUCTS

FOAM HAND WASH



9988

ANTIBACTERIAL FOAM HAND WASH

9988

POS Antibacterial Foam Hand Wash is the easiest way to clean hands. A fragrant, luxurious foam, is easily dispensed for an enjoyable hand wash.

- Fortified with chloroxylenol (0.25%) to further reduce bacteria with every wash
- Rich, luxurious lather
- Gentle on hands
- Pleasant scent
- Fortified with collagen
- 1000ML (1250 uses per 1000ML refill based on 0.8 per push)

For use with:

9921B, 9921W, 9921BB, 9921BW Dispenser, Overall Size: 5" x 4" x 11.25", 9729 Soap Stand

FOOD MANUFACTURING/ PACKAGING SOAP



4560

E2 FOAMFRESH® SANITIZER CLEANSER

4560

E2 FoamFresh® Sanitizer Cleanser is made for use in the Food Manufacturing/ Packaging Industries. E2 is a one-step hand wash that effectively reduces bacteria on the skin without the need for pre-wash.

- Helps support compliance with good hand hygiene practices
- Meets USDA regulations and requirements for food processing environments
- Excellent skin compatibility
- Mild yet effective hand wash for high-risk areas
- Fragrance-Free
- Dye-Free
- Perfect for frequent hand washings
- Active ingredient: 1.25% Benzelthonium Chloride
- Factory sealed pouches so there is no chance for contamination
- Keyless locking in manual dispenser. Key required in automatic dispenser
- Economical: Delivers more than 1,300 hand washes
- 1000ML (1250 uses per 1000ML refill based on 0.8 per push)

For use with:

9921B, 9921W, 9921BB, 9921BW Dispenser, Overall Size: 5" x 4" x 11.25", 9729 Soap Stand

HAND SANITIZER - ALCOHOL



9937AL

ALCOHOL INSTANT FOAM HAND SANITIZER

9937AL

The Alcohol Instant Foam Hand Sanitizer is formulated to kill 99.99% of the most common germs that may cause illness. No water or towels needed.

- Rich, luxurious foam
- Gentle on hands
- Fragrance Free
- Better coverage
- Active ingredient: 62% ethyl alcohol
- 1000ML (1250 uses per 1000ML refill based on 0.8 per push)

For use with:

9921B, 9921W, 9921BB, 9921BW Dispenser

Overall Size: 5" x 4" x 11.25", 9729 Soap Stand

HAND SANITIZER - NON-ALCOHOL



9937

NON-ALCOHOL INSTANT FOAM HAND SANITIZER

9937

The Non-Alcohol Instant Foam Hand Sanitizer kills 99.9% of most common germs that can cause disease. This foam hand sanitizer is designed to be used on clean, non-soiled hands any time where rinsing with water is not available.

- Time/Kill test provided 99.9% kill rates!
- Benefits from alco-free vs. alco-based are nonflammable and have better skin compatibility and is safer!
- Rich, luxurious foam
- Gentle on hands
- Pleasant scent
- Better coverage
- 1000ML (1250 uses per 1000ML refill based on 0.8 per push)

For use with:

9921, 9921W, 9921BB, 9921BW Dispenser

Overall Size: 5" x 4" x 11.25", 9729 Soap Stand

DISPENSERS FOR SOAP AND SANITIZERS

MANUAL DISPENSERS



9921B



9921W

AUTOMATIC BATTERY DISPENSERS



9921BB



9921BW

SOAP / HAND SANITIZER DISPENSERS

POS soap and hand sanitizer dispensers are the easiest way to clean hands. Soap and sanitizers are easily dispensed for an enjoyable hand wash or quick sanitize.

- Can be used with foam filled pouches that we offer
- Hold 1000ML factory-sealed pouches, so there is no chance for contamination
- Available in black or white finishes
- Available in manual or battery operated hands free options
- Overall Size: 5" x 4" x 11.25"

9921B MANUAL - BLACK
9921W MANUAL - WHITE

9921BB AUTOMATIC BATTERY - BLACK
9921BW AUTOMATIC BATTERY - WHITE

DISPENSER STAND



**FREESTANDING SOAP / HAND
SANITIZER DISPENSER STAND
9729
METAL**

- Keeps soap accessible in areas that the dispenser cannot be attached to a wall

**MAKES IT EASIER FOR
THE USER TO ACCESS
THE SOAP AND HAND
SANITIZER DISPENSERS
WHEN IN OPEN SPACES.**

INDUSTRIAL HAND CLEANER



**SOY PRO INDUSTRIAL HAND CLEANER
9428**

- Manufactured eco-friendly
- Solvent free, dye free
- Biodegradable formula
- Renewable soybean oil base
- Fibril scrubbers for extra cleansing power
- Soy protein and conditioners for maximum skin protection
- Exfoliates naturally

For use with:
9430 2125ML Dispenser

TRASH CAN LINERS & URINAL MAT

PREMIUM CAN LINER PROGRAM



LOW DENSITY CAN LINERS

This virgin LLDPE (Linear Low Density Polyethylene), reprocessed material, post-consumer recycled blended product is an excellent choice for heavy duty, industrial applications. The black opaque color hides unsightly trash. The Star Seal is utilized for proven performance.

- Industrial grade can liners
- Proven star seal for excellent performance, no weak points
- Black opaque liners hide unsightly trash

	9490
Size:	40" X 46"
Mil:	1.5
Color:	Black
New Weight:	18.4
Gallon Capacity:	45
Case Count:	100

HIGH DENSITY CAN LINERS

HDPE (High Density Polyethylene) can liners are widely accepted in the market as the "economy" can liners. Features and benefits include excellent odor and moisture barrier, and high dart impact and tensile strength. All HDPE liners are on coreless rolls. HDPE is an excellent choice for trash applications without sharp edges.

- Economy can liners offer source reduction
- Excellent odor and moisture barrier

	9998	9911	9990	9999
Size:	24"x24"	33"x40"	40"x48"	43"x48"
Micron:	6	13	16	16
Color:	Natural	Natural	Natural	Natural
Net Weight:	9.2	22.9	20.5	17.6
Gallon Capacity:	7-10	33	45	56
Case Count:	1000	500	250	200

URINAL MAT



URINAL MAT

9925A

- Super absorbent locks in 2-4 times more urine than other mats
- Looks better longer, preventing costly mat replacement
- Neutralizes urine with diaper industry technology. Every mat has a mold inhibitor and odor counteractant specifically designed for urine
- Our indicator system reminds custodial staff when to change it for timely maintenance without waste
- Protects from slips & falls with non-slip bottom, that keeps floors drier, by keeping mats under urinal

AIR FRESHENERS

doorFRESH™

Air freshening when and where you need it most!



doorFRESH™ DEODORIZER D9456R

- Odor control for any restroom
- Uses airflow created by opening and closing doors
- Each refill is 100% recyclable

SCENTS:



D9455MR
MANGO



D9455KGR
KIWI
GRAPEFRUIT



D9455PLR
PURE
LINEN



AIR FRESHENER DISPENSER 9456

- Fits most anywhere and is easily serviced.
- 4 3/25" x 2 1/2" x 2 3/25"

For use with: Air Freshener Refills

SCENTS:



9455M
MANGO



9455CM
CUCUMBER
MELON

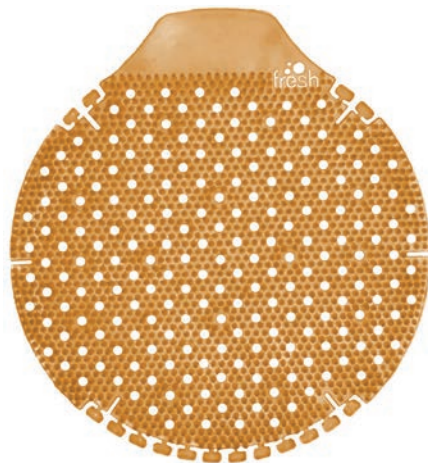


9455KG
KIWI
GRAPEFRUIT



9455PL
PURE
LINEN

URINAL SCREEN



URINAL SCREEN

- VOC Compliant
- Eliminates odors
- Last longer – FRESHENS FOR 60 DAYS!
- Saves time & money!
- Conforms to the urinal to trap debris
- Individually wrapped

SCENTS:



9925RM
MANGO



9925RCM
CUCUMBER
MELON



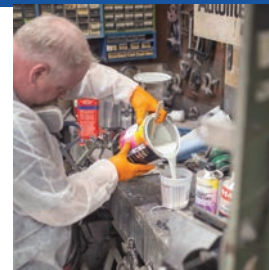
9925RKG
KIWI
GRAPEFRUIT



9925RPL
PURE
LINEN

DISPOSABLE GLOVES

NITRILE DISPOSABLE GLOVES (ORANGE)



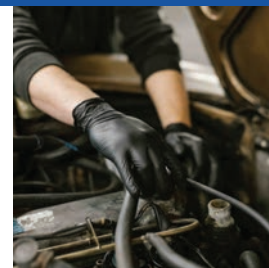
NITRILE DISPOSABLE GLOVES (ORANGE)

- 8-9 MIL
- LATEX FREE
- INDUSTRIAL GRADE
- POWDER FREE
- RAISED DIAMOND TEXTURE

Major users include: **Automotive, Chemical, Food Processing**

SIZES: **SM - XXL** QUANTITY: **100 Gloves/Box, 10 Boxes/Case**

NITRILE DISPOSABLE GLOVES (BLACK)



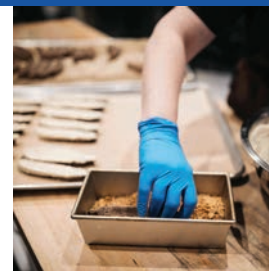
NITRILE DISPOSABLE GLOVES (BLACK)

- AVAILABLE IN 3 MIL & 6 MIL
- LATEX FREE
- INDUSTRIAL GRADE
- POWDER FREE
- TEXTURED

Major users include: **Automotive, Safety, Tattoo & EMS/Police/Fire**

SIZES: **SM - XL** QUANTITY: **100 Gloves/Box, 10 Boxes/Case**

NITRILE DISPOSABLE GLOVES (BLUE)



NITRILE DISPOSABLE GLOVES (BLUE)

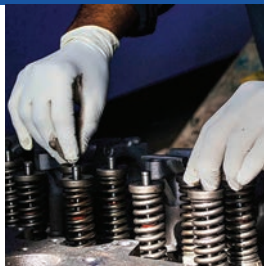
- AVAILABLE IN 3-4 MIL
- LATEX FREE
- EXAM GRADE AVAILABLE
- POWDER FREE
- TEXTURED

Major users include: **Healthcare, Dental, Food & Janitorial**

SIZES: **SM - XL** QUANTITY: **100 Gloves/Box, 10 Boxes/Case**

DISPOSABLE GLOVES

LATEX DISPOSABLE GLOVES



LATEX DISPOSABLE GLOVES

- 4-5 MIL
- POWDER FREE
- EXAM GRADE

SIZES: M - XL QUANTITY: 100 Gloves/Box, 10 Boxes/Case

VINYL DISPOSABLE GLOVES

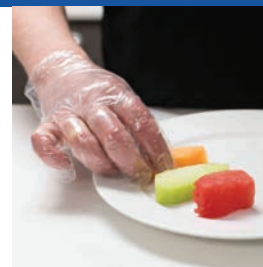
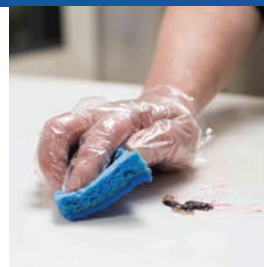


VINYL DISPOSABLE GLOVES

- 3-4 MIL
- POWDER FREE
- EXAM GRADE

SIZES: M - XL QUANTITY: 100 Gloves/Box, 10 Boxes/Case

POLY DISPOSABLE GLOVES



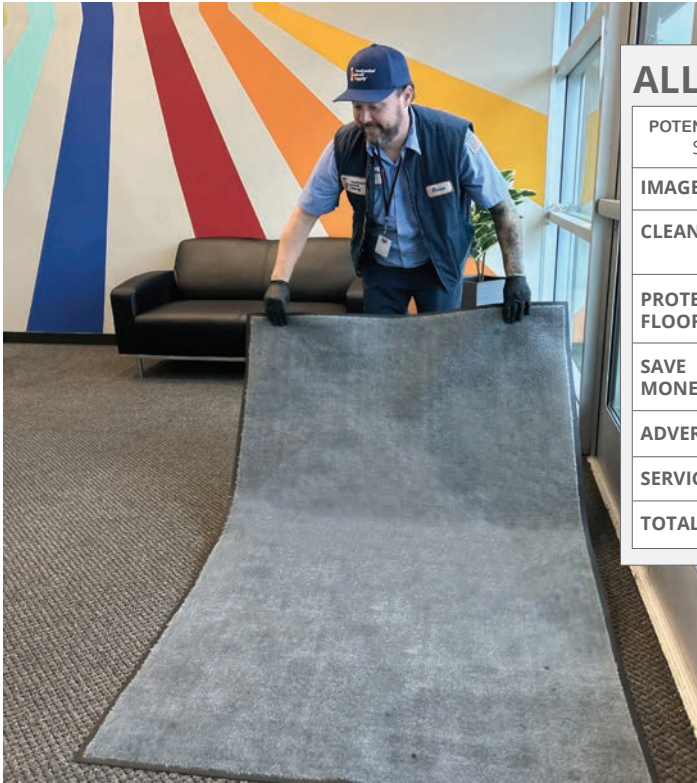
POLY DISPOSABLE GLOVES

- 1 MIL
- STRETCH HYBRID
- SHORT TERM TASKS

SIZE: L QUANTITY: 500 Gloves/Box, 4 Boxes/Case

Please note that all gloves subject to availability

FACILITY MAT SOLUTIONS



ALL MATS ARE NOT CREATED EQUAL.

POTENTIAL CUSTOMER BENEFITS FROM FLOOR MATS. Store Bought vs. Prudential's Rental Mat		Store Bought Mats	Prudential Rental Mats
IMAGE	Enhance facility's appearance		✓
CLEANING	Dust Control, up to 90% of all dirt captured & removed. The silent janitor.		✓
PROTECT FLOORS	Increase hard surface floor finish like, reduce carpet traffic wear.	✓	✓
SAVE MONEY	Reduce cleaning costs saving \$500 per lb. Reduce computer breakdowns, etc.		✓
ADVERTISING	Logo branding, Safety messages, etc.		✓
SERVICE	Professionally cleaned & sanitized weekly.		✓
TOTAL ANNUAL COST	Estimate for 3' x 4' Mat	100%	85%

The decision to have service provided floor mats is a smart, cost-effective move that reduces maintenance costs, conveys a professional image to customers, and ensures the safety and health of customers and employees.

Leaving the dirty work to Prudential lets you concentrate on your business!

COST/SERVICE COMPARISON DISPOSABLE MAT

Retail Purchase Mat
3' x 4'

- Cost of Mat (2/year)
- Cleaning Cost (10 hours @ \$ hour)
- Cleaning Supplies
- Supervisors Time

100% TOTAL COST

Professional Mat Service
3' x 4'

- Cents per day
- Per week
- Per year
- No Hassles
- No up front inventory charge
- Saves on Maintenance

85% TOTAL COST

15% Less than a Purchase Mat!



- More than 80% of dirt and grime in public buildings is tracked in from outside.
- Professionally serviced floor mats can catch up to 70% of the dust tracked into your facility.
- One square yard of commercial carpeting can accumulate one pound of dirt a week and up to two pounds a week during wet weather.
- The cost of removing one pound of dirt from a building can easily exceed \$500.
- Only 10% of dirt is removed from floor mats with a vacuum cleaner.
- 96% of building maintenance cost is labor!
- Reusable Mat Products are Environmentally Friendly vs. Disposable Purchase Mats.

You pay only a nominal charge, and soiled mats are exchanged with freshly laundered mats each week.

FACILITY MAT SOLUTIONS



CLASSIC SOLUTIONS MAT

Classic Solutions and Solutions Plus mats feature a slip-resistant rubber backing and a solution-dyed carpet surface designed to stop dust, dirt, and moisture at your door and provide a safe walking surface.

- Resilient - High-twist, heat-set nylon resists crushing to better trap dirt and extend the useful life of the mat
- Fade-Resistant - Solution-dyed nylon is fade-resistant and impervious to bleach
- Safe - Certified high-traction by the National Floor Safety Institute (NFSI)
- Recommended for indoor commercial use at entryways, in lobbies, at front desks or anywhere additional traction or moisture control is needed.

CLASSIC SOLUTIONS CG

903X 3'X4'
904X 4'X6'
907X 3'X10'



Additional Sizes Available

(X)= COLOR



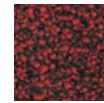
(3)
GOLDEN
BROWN



(4)
BLACK



(5)
MIDNIGHT
GREY



(6)
CHEYENNE
RED



(8)
DEEPER
NAVY



COLORSTAR IMPRESSIONS LOGO MAT

ColorStar Impressions mats feature your custom logo or artwork digitally printed on eco-friendly PET (polyethylene terephthalate) fabric.

- Photographic-Quality Print - Logos and designs are digitally printed at 76 dpi, making fine details, shading, and 3D images achievable
- Eco-Friendly - PET (polyethylene terephthalate) carpet surface contains 100% recycled content reclaimed from plastic
- Fade Resistant - PET yarn has excellent color-fastness and is resistant to fading from repeated washing/cleaning
- Stain Resistant - PET yarn is naturally resistant to staining
- Recommended for indoor commercial use at entryways, in lobbies, at front desks or anywhere you want to display your company logo, slogan, artwork, or message to customers/visitors or employees.

COLORSTAR IMPRESSIONALS LOGO MAT CG

9231 3'X5'
9241 4'X6'



STOP DIRT AT THE DOOR.

FACILITY MAT SOLUTIONS



MESSAGE MAT

Many of our carpeted logo mats can be printed with standard messages regarding safety, and for specific locations like coffee stations. Please consult with your Prudential sales representative for additional details and options.

- Provides important messages while capturing dirt and moisture, helping reduce slip-and-fall accidents and maintain your floor
- Bilingual mats available
- Associated sizes and designs available

MESSAGE MAT CG

9030 3' X 4' - Welcome Message

9031 3' X 4' - Safety Message



Additional Codes and Sizes Available Also Vary By Mat Design Style



SUPERSCAPE PLUS MAT

SuperScrape Plus mats feature a multi-directional molded tread pattern that effectively scrapes tough dirt and grime from shoes. The unique drainable borders help filter water off the mat, making it ideal for use outside as a scraper mat or as a slip-resistant mat in wet areas.

- Clean - Multi-directional surface cleats effectively remove and trap dirt and sand below shoe level to prevent tracking; drainable borders filter water off mat
- Safe - Slip-resistant even in wet environments; certified high-traction by the National Floor Safety Institute (NFSI)
- Durable - Grease/oil proof and chemical resistant
- Easy to Clean - Lightweight flexible design ensures easy handling and cleaning (shake off soil and hose off)
- Recommended for use as an outdoor scraper mat or in wet areas where additional traction is needed.

SUPERSCAPE PLUS MAT CG

9238 3' X 5'

9248 4' X 6'



Drainable borders filter water off the mat while multi-directional surface cleats remove and trap dirt and sand below shoe level to minimize tracking



FACILITY MAT SOLUTIONS



COMPLETE COMFORT MAT

Complete Comfort mats are ergonomically superior anti-fatigue mats designed for dry or damp environments.

- Comfortable - 5/8" thick nitrile-blended foam provides superior anti-fatigue properties
- Clean - Anti-microbial treatment provides lifetime protection from odors and degradation
- Safe - Beveled edges provide a safe transition from floor to mat; certified high-traction by the National Floor Safety Institute (NFSI)
- Easy to Clean - Lightweight and flexible for easy handling and cleaning
- Grease and oil resistant; chemical resistant
- Recommended for use in commercial and industrial settings (dry or damp).

COMPLETE COMFORT MAT CG

9212 2' X 3'

9232 3' X 5'



COMFORT FLOW MAT

Comfort Flow is a flow-through mat with excellent anti-fatigue properties designed for wet areas where grease, oil, and chemicals may be present.

- Clean - Drainage holes allow liquid to flow through; lifetime anti-microbial treatment prevents odors and degradation of the mat
- Safe - Beveled edges provide a safe transition from floor to mat; certified high-traction by the National Floor Safety Institute (NFSI)
- Comfortable - High-density closed-cell nitrile rubber foam provides excellent anti-fatigue qualities
- Versatile - Grease and oil proof; chemical resistant; welding safe
- Easy to Clean - Lightweight flexible design ensures easy handling and cleaning
- Recommended for indoor/outdoor use in wet or dry commercial or industrial environments including but not limited to commercial kitchens, restaurants, cafeterias, bars, food processing facilities, restrooms, and hospital scrub stations.

COMFORT FLOW MAT CG

9234 3' X 5'



PRUDENTIAL'S PROMISE



PRUDENTIAL'S PROMISE

WE ARE DIFFERENT

Contact Prudential today to discover how we are different with our Budget Protection Program, Price Guarantee, and Customer Exception Reports. Complete Customer Satisfaction makes Prudential the right choice for your uniforms, cleanroom and textile services!

- ✓ Family Owned
- ✓ Budget Protection Program
- ✓ Price Guarantee
- ✓ Customer Exception Reports
- ✓ Service Guarantee



Scan to
find out more!



ACCOUNTABILITY

✓ Exclusive Garment Tracking System (GTS) RFID Tag Technology

- RFID Tag Technology: Our GTS RFID Tag Technology was developed in coordination with our customers. Our ongoing evaluation of this system, and the consistent input from its users ensures the GTS RFID Tag Tracking System represents the latest technology.
- GTS RFID Tag Tracking System provides our customers with a complete account history report for each garment from installation to any repairs. It also tracks usage analysis by unique tracking number, department and distribution point.



AVAILABILITY

✓ One-Of-A-Kind Distribution Center

- The high-quality services Prudential delivers each week are thanks in part to our one-of-a-kind distribution center. It is the heart of our operations that ensures we remain the leading uniform service, cleanroom and facility services provider in North America.
- Our distribution center processes over 2 million garments annually. Our distribution team of dedicated employees can easily fulfill garment order requirements. The team also applies name tags, company emblems, direct embroidery, and RFID tags.
- We offer centralized stock for industrial and cleanroom garment customers. Our facility team receives and processes new garment customer programs, as well as reusable garment modifications for all existing client requirements.

CUSTOMER BENEFITS:

- Centralized inventory for quick replacements upgrades and new accounts.
- Wide variety of sizes and industry accepted styles will be stocked.
- Prudential Overall Supply's automatic ordering level quickens the fulfillment cycle, and ensures complete and timely deliveries.

PRICING COMMITMENT & COST GUARANTEE



John D. Clark
Founder

Dan Clark
Chairman
of the Board

John Clark
Chief Executive
Officer

FAMILY OWNED & OPERATED

✓ Family owned and operated since 1932, Prudential Overall Supply is dedicated to enhancing our customers' image at the best dollar value. By providing premium quality work wear uniforms, career apparel and casual wear, Prudential is able to outfit your entire organization. This on-time weekly service also addresses your facility's image and safety requirements by offering logo floor mats, wiping towels and paper products.

A MESSAGE FROM OUR FOUNDER

"Tell the customer exactly what we can and cannot do. Then, do everything we have promised and expect a fair price for our services. If we all do this, we will grow, retain our customers and prosper."



BUDGET PROTECTION PROGRAM

✓ Never pay an unexpected charge again for loss, damage, prep or lettering!
Allows you to correctly budget your program costs.



PRICE GUARANTEE

✓ **Prudential's Promise**

We Guarantee the established pricing on all rental items for a **1 year period**. That means you never have to worry about random price increases and it allows you to budget costs for your business precisely.



CUSTOMER EXCEPTION REPORT

✓ Exception report alerts will occur for any items that are not listed on the account template:
Merchandise, Pricing, etc.



SERVICE GUARANTEE

✓ Our entire process is built to ensure complete customer satisfaction and guarantees service levels are met.

WE ARE DIFFERENT

and our differences BENEFIT YOUR TEAM!



TOP QUALITY MANUFACTURERS

We represent leading manufacturers to assure your team the best available quality and availability, coupled with leading edge offerings.



CUSTOMIZED LOGOS

Prudential has many logo options to help your brand look great: whether the technology is ink jet, embroidered, or PENN Edge, all are designed to enhance your brand image.



CUSTOMER SALES REPRESENTATIVE

Your Customer Sales Representative is the link between you and our service facilities. They are qualified, experienced professionals with extensive supervised training and certification. All CSR's are equipped with PDA's to accommodate real time customer response performance.



INVENTORY CONTROL - RFID

The garments are delivered by the Customer Sales Representative to your location. All garments are RFID tagged and scanned, so you receive a complete account each week of what is delivered. This information can further be accessed by our Customers using Prudential's Customer Portal located on our website. Prudential verifies that what was picked up is delivered as promised; cleaned, finished and repaired.



GARMENT REPLACEMENT

We have written quality garment standards. Garments are replaced as needed.



QUALITY ASSURANCE INSPECTOR

Prudential's Quality Assurance Inspector process identifies needed Repairs, Replacements and Upgrades! The Quality Assurance Inspector is tasked with individually inspecting each garment before it is released. Garments needing repair are routed to the repair station and returned for distribution to be delivered on time. Having the Quality Assurance Inspector means that our customers have uniforms that are repaired, cleaned and ready for use each day; keeping them looking professional and ready to work.



EYE-OPENER SERVICE TAG

Allows your employee to point out specific repair and service needs. The tag is attached to the garment throughout the cleaning process to ensure your repaired garments are delivered the following week. You remove the tag to ensure the repair was completed properly. Our system has been engineered to provide checking and double-checking of repairs. Prudential employs quality assurance inspectors to assure 100%.





PROFESSIONALLY FINISHED SHIRTS AND PANTS

Your shirts and pants are professionally steamed giving them a superior finish.



COST CONTROL

Our invoices are complete and easy to understand. You get all the information you need to maintain cost control. And, our system can be customized to match your company's individual needs. Invoices and statements can be accessed on-line using the customer portal.



SCHEDULED SERVICE REVIEW

Our Customer Visitation Service Check allows you to periodically grade us and our service. This assures your satisfaction. We respond quickly if there is need for improvement and eliminate problems before they start. Prudential receives excellent Customer Satisfaction Scores that are posted on-line for each of Prudential's serving facilities.



CONTINUOUS GARMENT UPGRADE

Garments are upgraded as needed.



BUDGET PROTECTION PROGRAM

Never pay an unexpected charge again for loss, damage, prep or lettering!

Allows you to correctly budget your program costs.



PRICE GUARANTEE

More than a good idea or just words: We Guarantee the established pricing on all rental items for a 1 year period.

No random price increases on rental, per piece charges.



SERVICE GUARANTEE

Ensures complete customer satisfaction, and guarantees service levels are met.



AN OPEN INVITATION

We invite you to tour our service facilities. You can see for yourself our team's standards for delivering the highest quality and individualized service for your team!



CUSTOMER ONBOARDING

10 point checklist for a seamless transition.





Since 1932, Prudential Overall Supply continues to provide best-in-class solutions for businesses for uniforms and textile rental programs.

UNIFORM AND RELATED SERVICE PROGRAMS INCLUDE:

RENTAL LEASE PURCHASE

Prudential is grateful for the exceptional work produced by our industry-best tenured employees, and to our exceptional customer patronage.

It is this connection that enables Prudential to provide our customers with the best possible products and service at a fair price, today and into the future.



800-767-5536

PRUDENTIALUNIFORMS.COM

CAUTION:

Garments contained in this catalog meet government flammability Class 1 requirements but do not provide protection from ignition sources, molten substances or chemical exposure. Special flame resistant garments are available if required.

Product images and fabric swatches shown here are photomechanically reproduced. As a result, actual product and colors may vary from actual fabric samples and availability. Sizes may vary by color and availability.

©COPYRIGHT PRUDENTIAL OVERALL SUPPLY. FORM #12931-26

